

PROVIDENCE, R.I.
CITY ENGINEER'S OFFICE
STREET LINE DEPT.

June 29, 1895.

024118

Note, The lines of Cove street as shown (A B C D E F) agree with the plat accompanying the petition of the adjoining owners.

PLAT OF COVE STREET

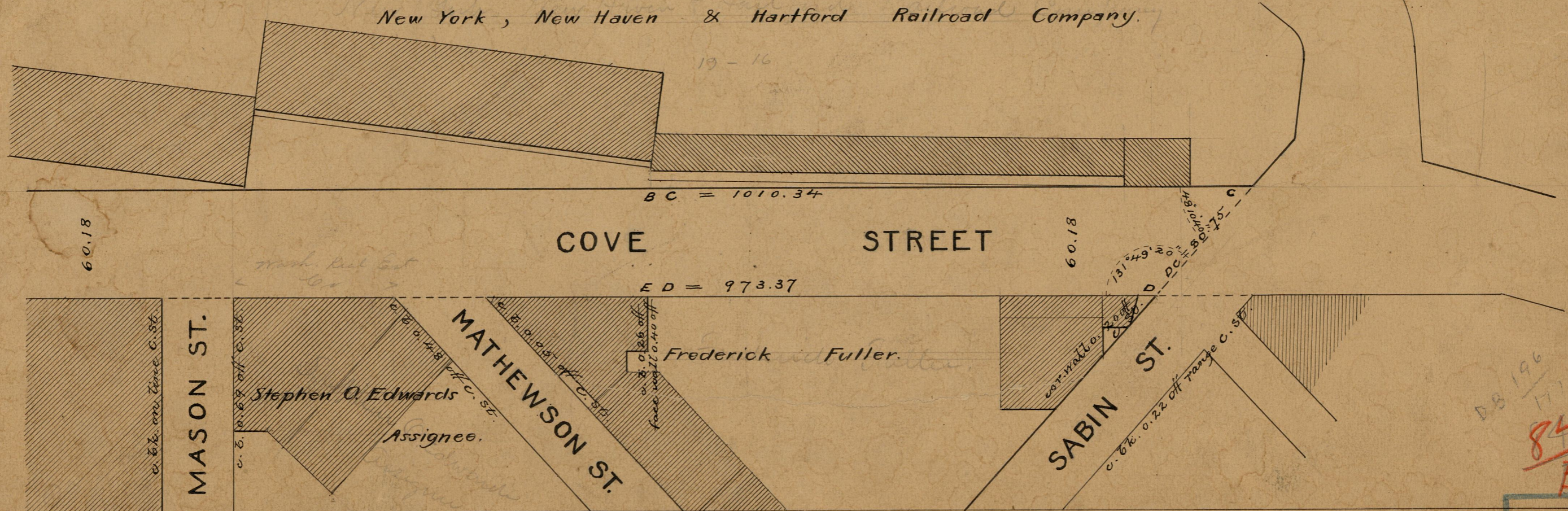
FROM WEST EXCHANGE ST. TO SABIN ST.

SCALE 60 FEET PER INCH.

Changed to West Exchange St.

Oct. 17, 1895.

300.70	1311.04	329.14
1010.34	1302.51	973.37
1311.04	22613.55	1302.51
	1306.77	



DB 196
84
B-96

OFFICE No. 1263
DRAWER 84
SHEET B-96