

Land S. Dwyer Eng.

F.B.B. XIX-2-3

PROVIDENCE, R.I.  
CITY ENGINEER'S OFFICE  
STREET LINE DEPT.

June 3, 1895.

023986

# PLAT OF VAN ZANDT STREET

FROM JACKSON AVE. TO HAMBURG AVE.

SCALE 40 FEET PER INCH.

302  
52.40  
85.16  

---

439.56

439.56  
426.03  

---

2865.59  
432.79

302.22  
51.81  
72.00  

---

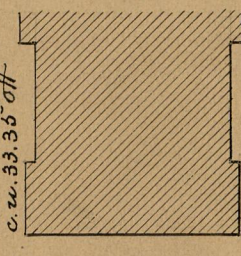
426.03

*Catharine*  
JACKSON AVE.

JACKSON AVE.

HA = 46.00  
Granite bound 0.07 on V.Z. St.

33.35' c.w. 33.35' off



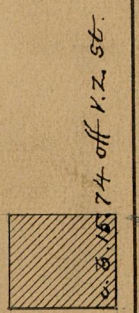
City of Providence.

Daniel Coyle.

Margaret Barden.  
Catharine Barden.

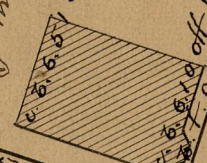
Hannah Mowry.  
Along P. Mowry.  
Susan S. Dean.  
Mary E. Atwood, wife  
of William K.

William K. Atwood.  
Joseph Nichols.

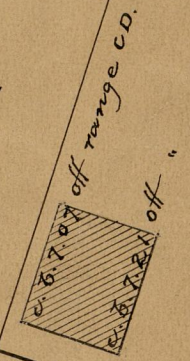


AVE.

Benjamin H. Harrington.



HAMBURG AVE.



AB = 302.00

HG = 302.22

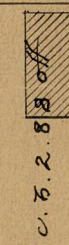
VAN ZANDT STREET



Jeremiah Bee.

Joseph A. Hull,  
*Thos. M. Mowry*

Thomas Dwyer.



c. 0.2.83 off  
c. 0.2.36 off V.Z. St.

PACIFIC

face pt. 0.78 on P.E.

Michael Farrell.

face pt. 0.02 on V.Z. St.

HAMBURG AVE.

OFFICE No. 12625  
DRAWER 84  
SHEET B-94