

PROVIDENCE, R.I.
CITY ENGINEER'S OFFICE
STREET LINE DEPT.

Apr. 18, 1895.

023781

PLAT OF ELMHURST AVENUE

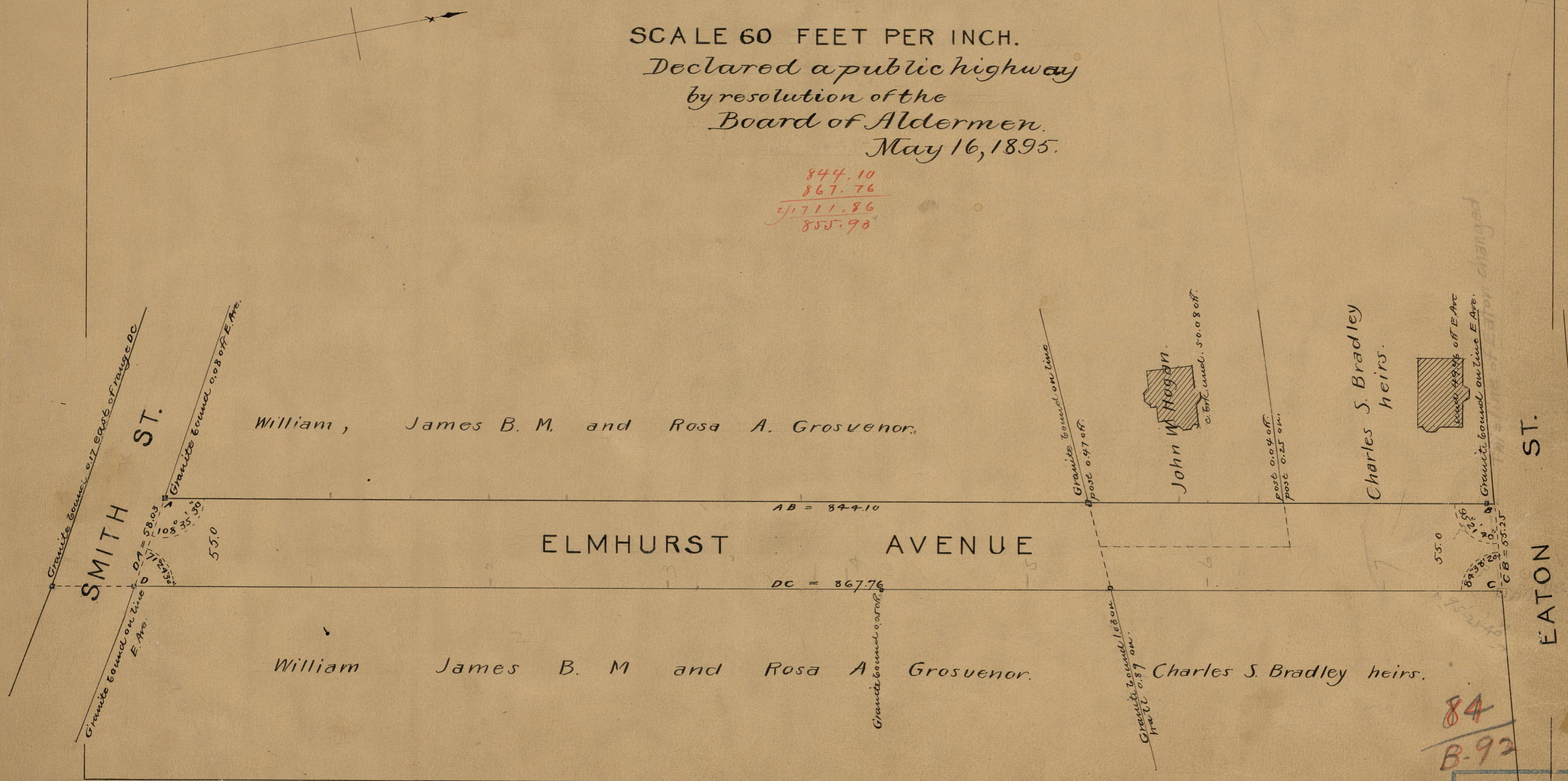
FROM SMITH ST. TO EATON ST.

SCALE 60 FEET PER INCH.

Declared a public highway
by resolution of the
Board of Aldermen.
May 16, 1895.

Note. The lines shown (ABCD)
correspond with plat accompa-
nying the petition of the
owners.

844.10
867.76
21711.86
855.90



84
B-92

OFFICE No. 12602
DRAWER " 84
SHEET B-92