

PROVIDENCE, R.I.
CITY ENGINEER'S OFFICE
STREET LINE DEPT.

Apr. 19, 1895.
023786

Note, The lines indicated (ABCD)
agree with the deed recorded
in Deed Book 393, page 208,

PLAT OF STRIP OF LAND SIXTY FEET WIDE

FROM BROAD ST. TO ROGER WILLIAMS PARK

SCALE 150 FEET PER INCH
DECLARED A PUBLIC HIGHWAY

BY RESOLUTION OF THE
CITY COUNCIL

January 4, 1895.

*Named Miller Avenue
Named Miller Ave, June 20, 1895.*

2047.95
2047.47

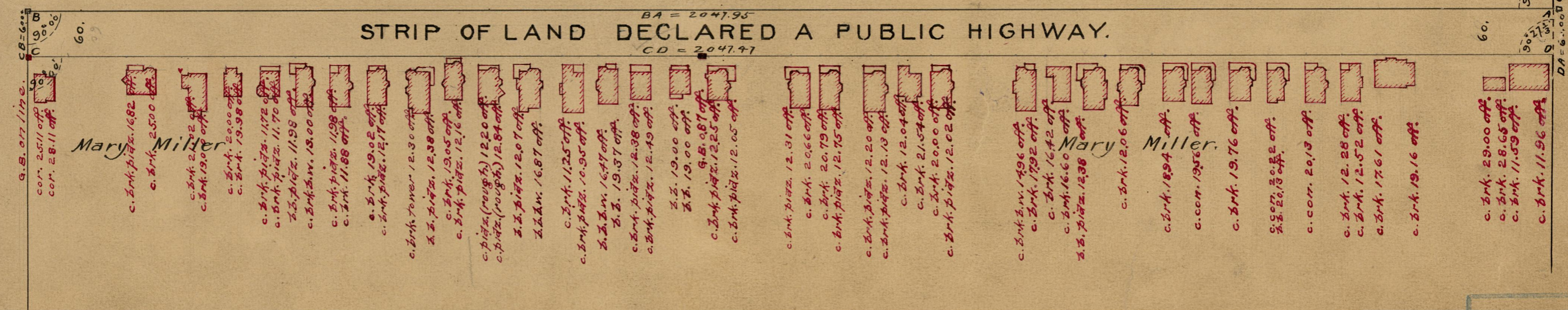
44095.42
2047.71

10 walks.

Roger Williams Park.

Roger Williams Park.

Roger Williams Park.



DA = 6.000 Grants bound on range AB.

BROAD ST.

OFFICE No. 12600
DRAWER 84
SHEET B-90

84
B-90