

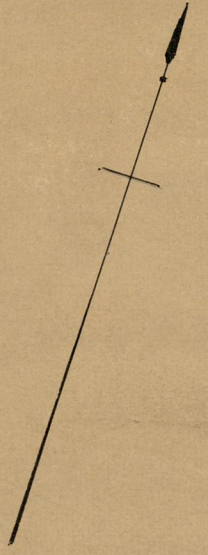
PROVIDENCE, R.I.  
CITY ENGINEER'S OFFICE

STREET LINE DEPT.

Apr. 19, 1895.

023785

Note, The lines indicated (ABCD)  
correspond with the deed conveying  
Tingley St. to the city  
See deed book 396 page 144



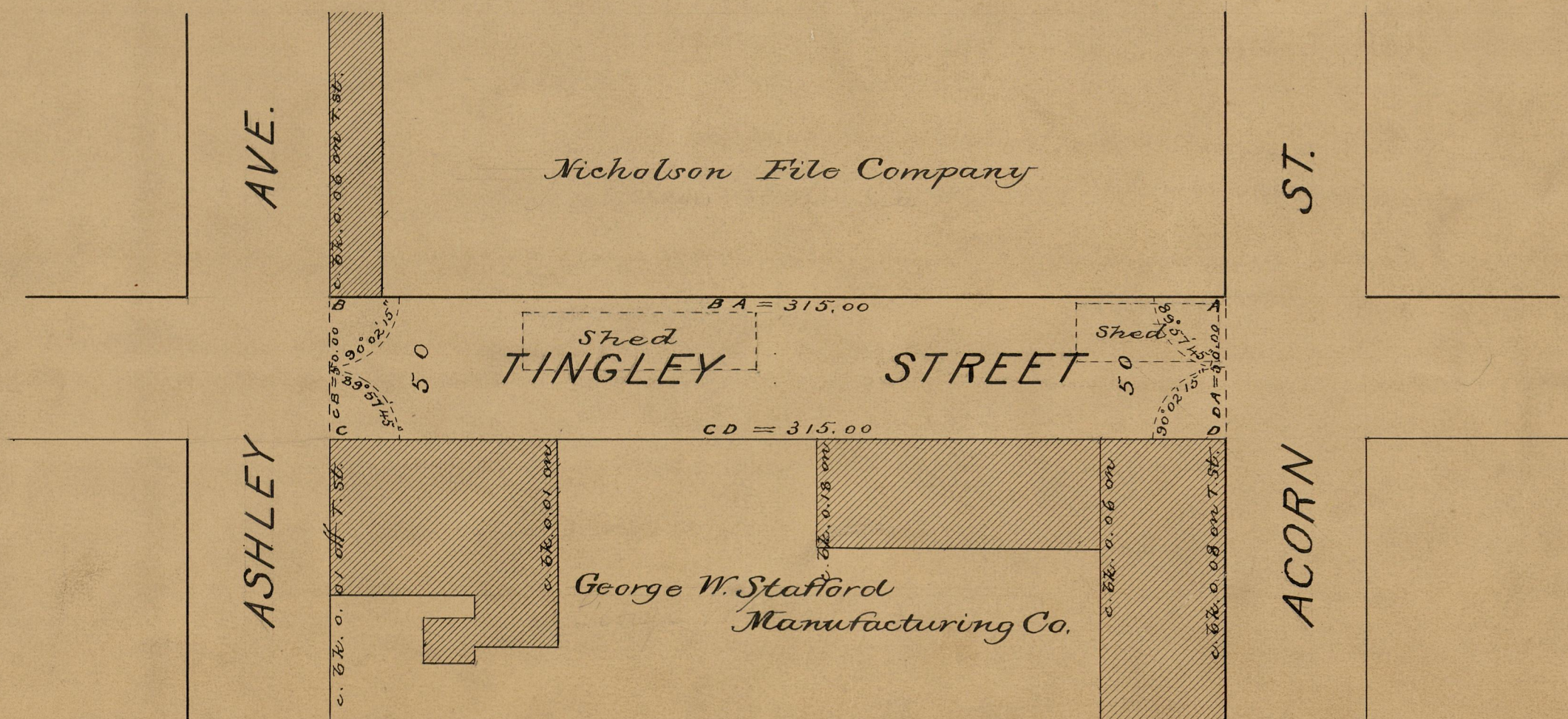
# PLAT OF TINGLEY STREET

FROM ACORN ST. TO ASHLEY AVE.

SCALE 50 FEET PER INCH.

Declared a public highway by  
resolution of the  
City Council  
March 22, 1895.

315.00



OFFICE No. 1259  
DRAWER 84  
SHEET B-89