

Notes in red from F. B. Bounes Field Book XVII page 134

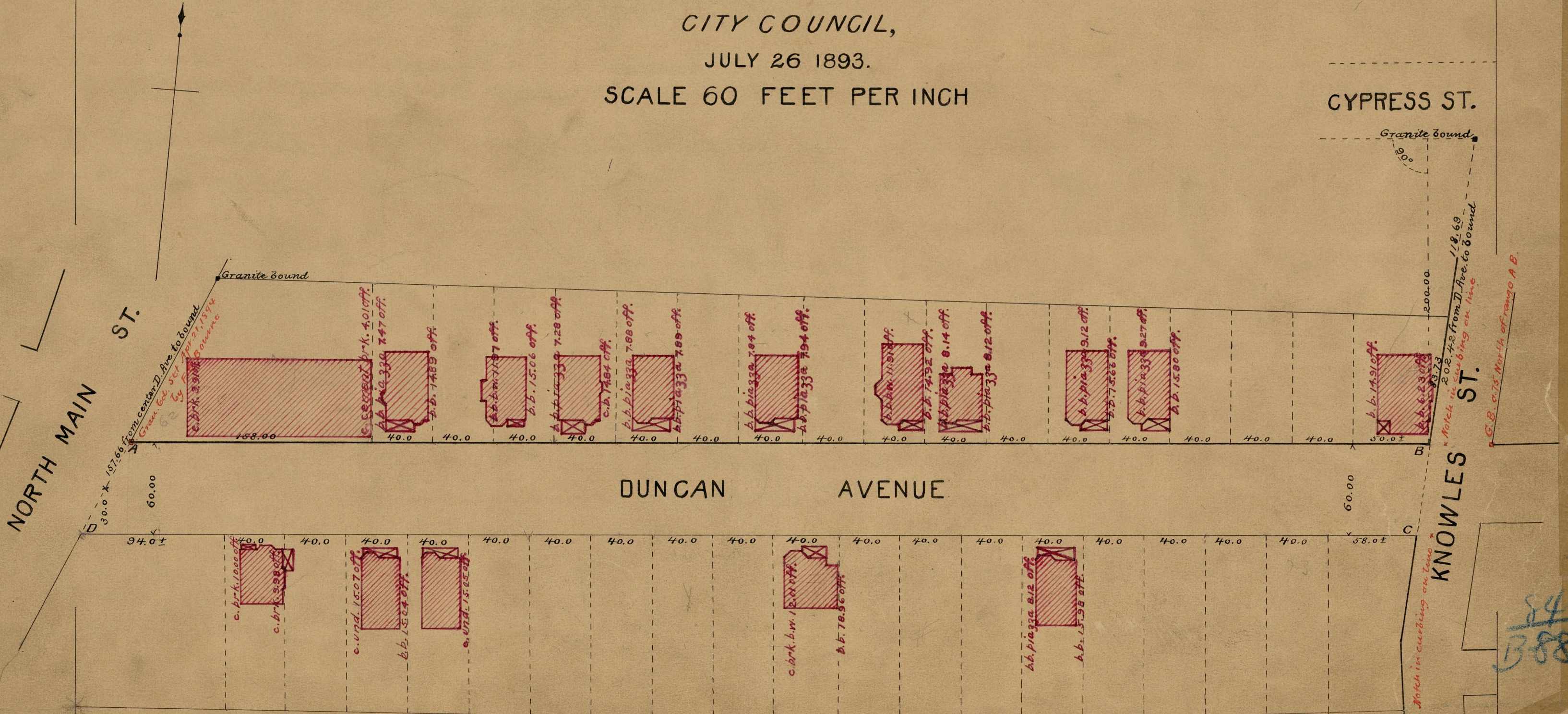
PROVIDENCE, R.I.
CITY ENGINEER'S OFFICE
STREET LINE DEPT.

Mar. 19, 1895.

023683

Note, The letters A B C and D indicate the area dedicated. See deed of Butler Exchange Co. to City of Providence in Deed book 379, page 310, and "Plat of lots between North Main and Knowles streets" &c, on card 666 in the office of the recorder of deeds.

PLAT OF
DUNCAN AVENUE
DEDICATED FOR HIGHWAY PURPOSES
BY JOINT RESOLUTION OF THE
CITY COUNCIL,
JULY 26 1893.
SCALE 60 FEET PER INCH



NORTH MAIN ST.

CYPRESS ST.

KNOWLES ST.

DUNCAN AVENUE

84
84
B-85
OFFICE No. 12579
DRAWER 84
SM