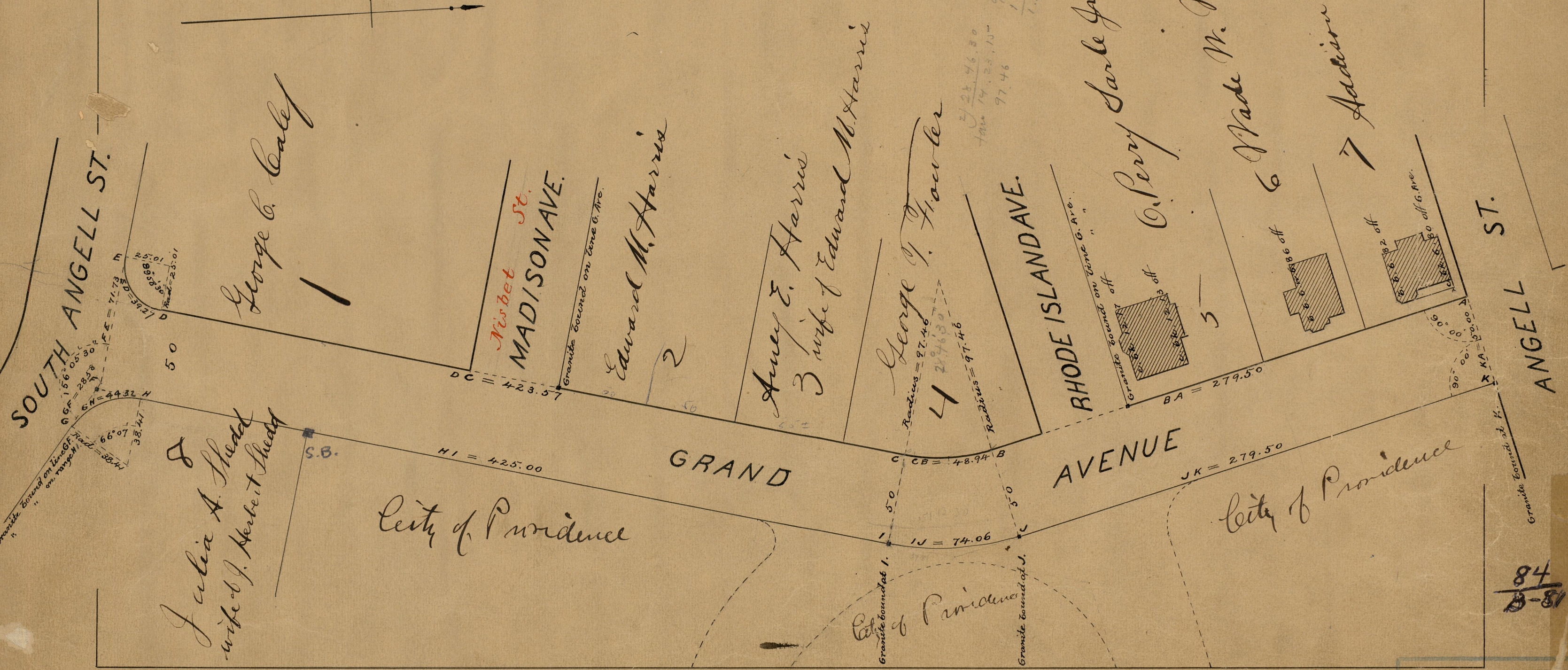


PROVIDENCE, R.I.
CITY ENGINEER'S OFFICE
STREET LINE DEPT.
Oct. 9, 1894.
023164

PLAT OF
GRAND AVENUE
FROM ANGELL ST. TO SOUTH ANGELL ST.
SCALE 50 FEET PER INCH.

990.29

Changed to Paterson St. Dec. 7, 1899.
Patterson



Julia A. Head
wife of J. Herbert Head

City of Providence

84
B-81

84
B-81

OFFICE No. 12,392
DRAWN BY 84
SHEET B-81