

PROVIDENCE, R.I.
CITY ENGINEER'S OFFICE
STREET LINE DEPT.

Oct. 8, 1894.

023159

Note The lines of Bolander St.
as shown correspond with the
deed recorded in Deed Book 253
page 43 in the office of the
Recorder of Deeds.

PLAT OF BOLANDER STREET

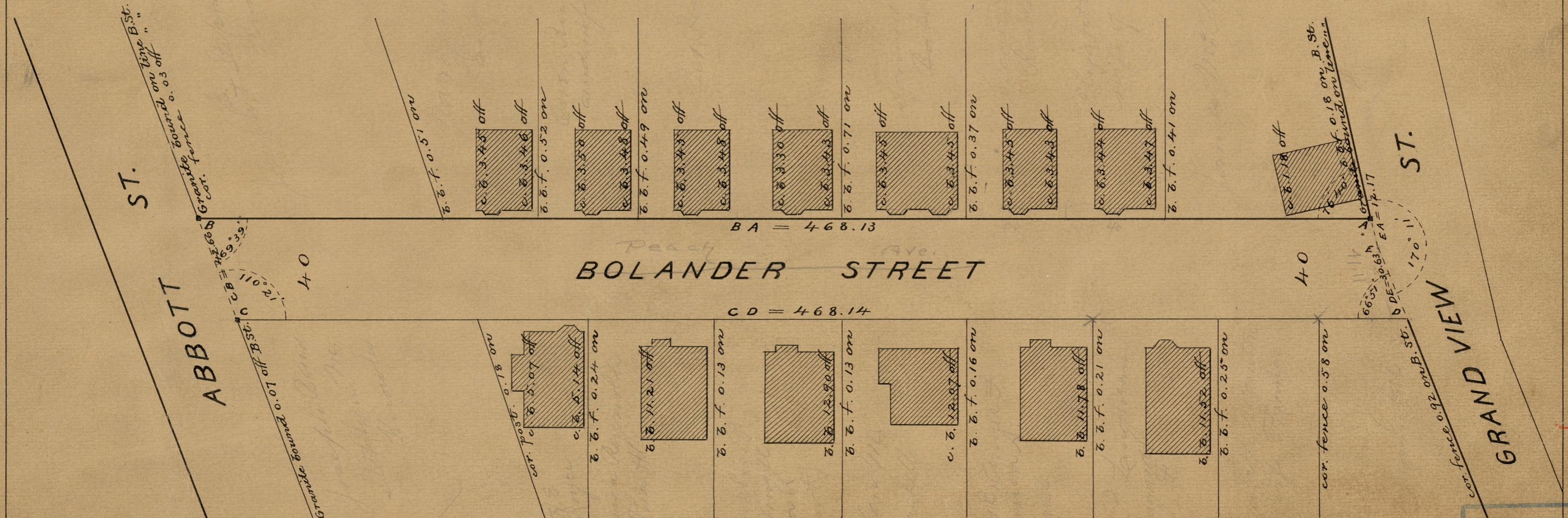
FROM GRANDVIEW ST. TO ABBOTT ST.

ORDERED REPAIRED
BY RESOLUTION OF THE
BOARD OF ALDERMEN
September 20, 1894.

CHANGED TO PEACH AVENUE
May 15, 1913

SCALE 40 FEET PER INCH.

468.14



84
B79

84
B-79

OFFICE No. 12390
DRAWER " 84
SHEET " 8-79