

914

FRBXVII-180

PROVIDENCE, R.I.
CITY ENGINEER'S OFFICE
STREET LINE DEPT.

035847

July 7, 1908.

PLAT OF SARATOGA STREET

FROM BROAD ST. TO BAXTER ST.

SCALE 50 FEET PER INCH.

566.33
568.92
2/1135.25
567.625

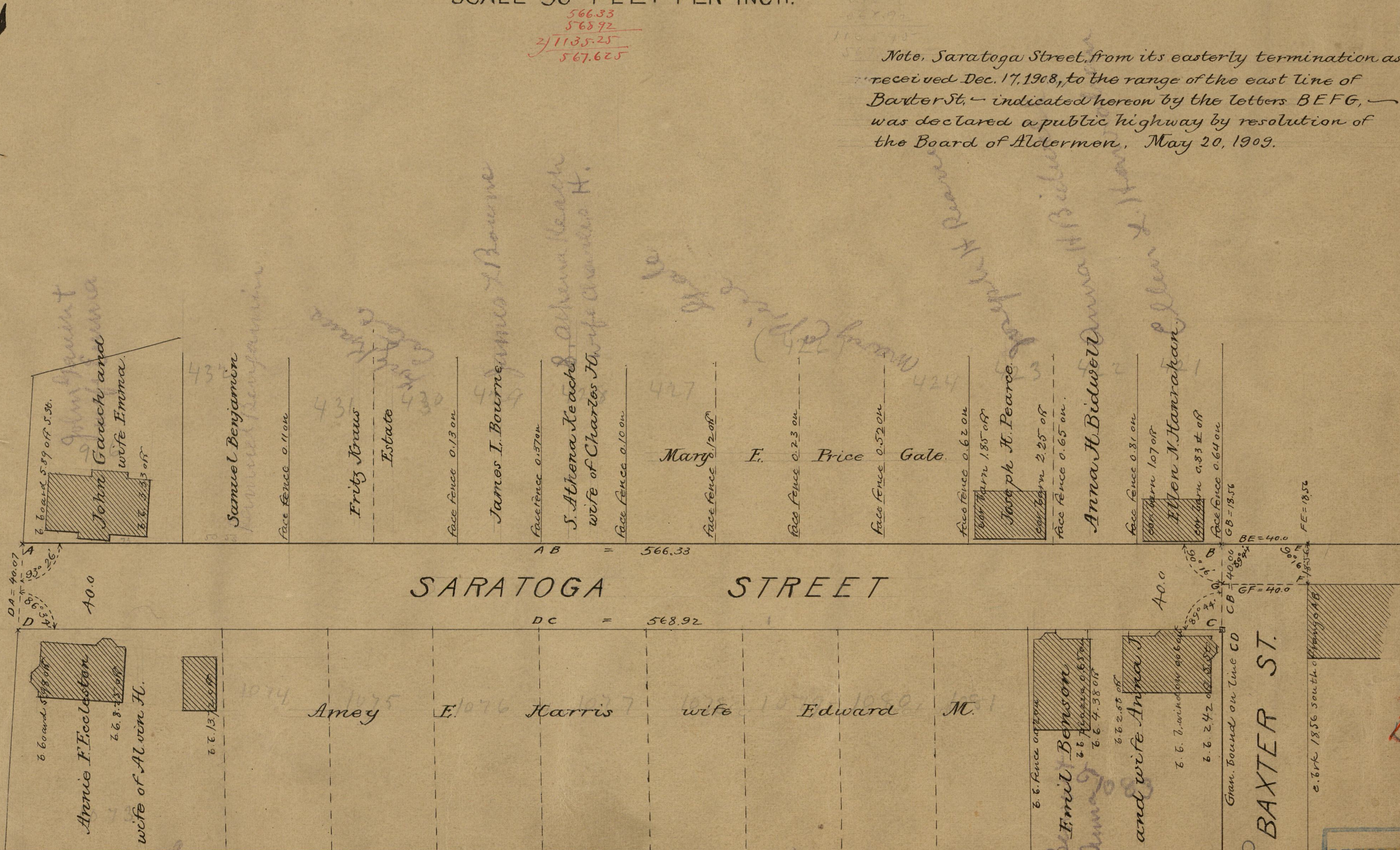
Note. Saratoga Street, from its easterly termination as received Dec. 17, 1908, to the range of the east line of Baxter St., indicated hereon by the letters BEFG, was declared a public highway by resolution of the Board of Aldermen, May 20, 1909.

BROAD ST.

BROAD ST.

SARATOGA STREET

BAXTER ST.



OFFICE No. 12389
DRAWER 34
SHEET B-78

84
B-78

12389