

PLAT OF MARYLAND AVENUE

FROM MASSACHUSETTS AVE. TO NEW YORK AVE.

IN TWO SHEETS

SCALE 60 FEET PER INCH

1242.0

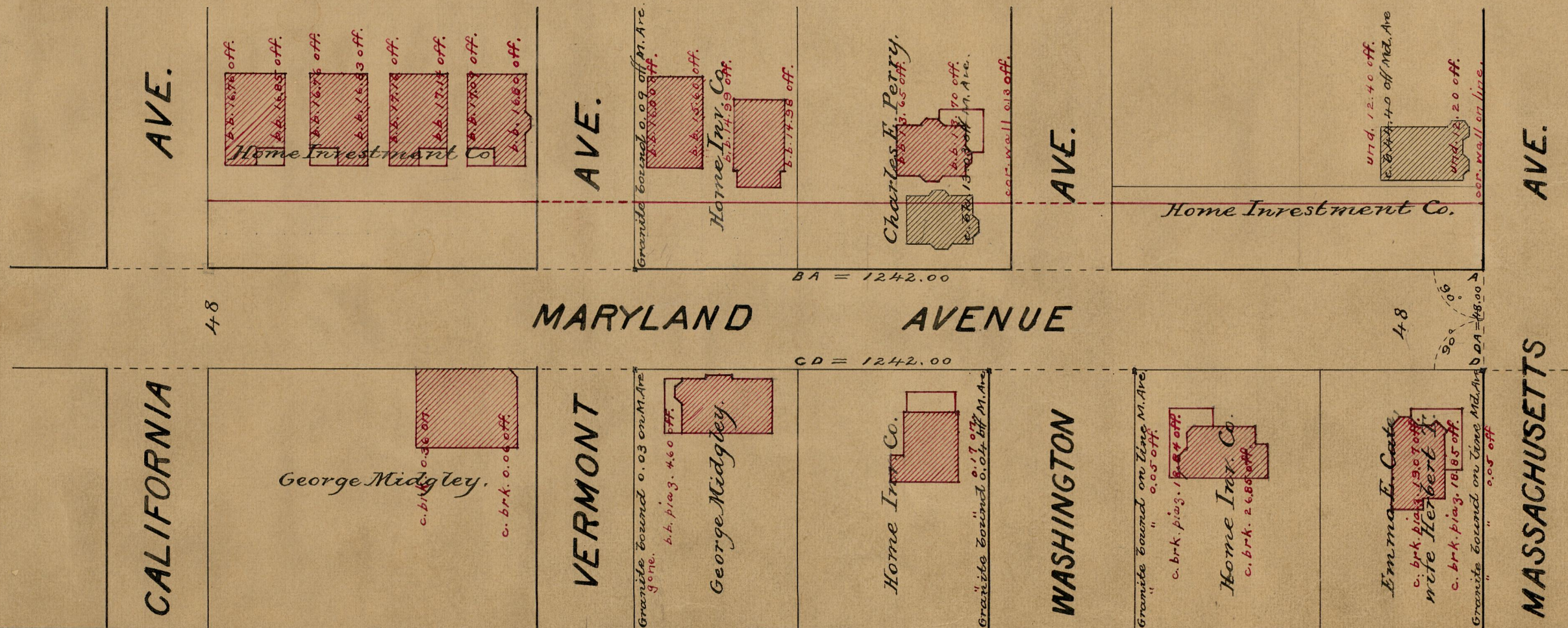
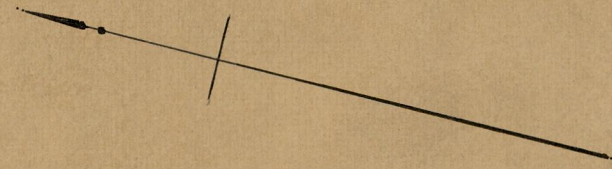
Changed to Narragansett Blvd. Sept. 1, 1927

PROVIDENCE, R.I.
CITY ENGINEER'S OFFICE

STREET LINE DEPT.

Sept. 12, 1894

023051



84
B-73

84
B-73

OFFICE No. 12345
 DRAWER " 81-
 11-77