

PROVIDENCE, R.I.  
CITY ENGINEER'S OFFICE

STREET LINE DEPT.

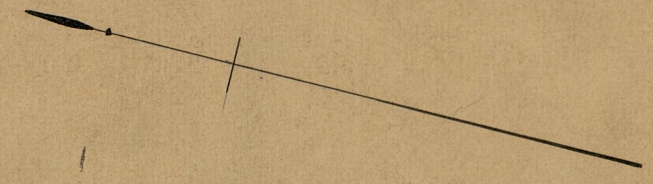
Sept. 12, 1894.

023048

PLAT OF  
**VIRGINIA AVENUE**  
FROM MONTGOMERY AVE. TO NEW YORK AVE.

IN TWO SHEETS  
SCALE 60 FEET PER INCH.

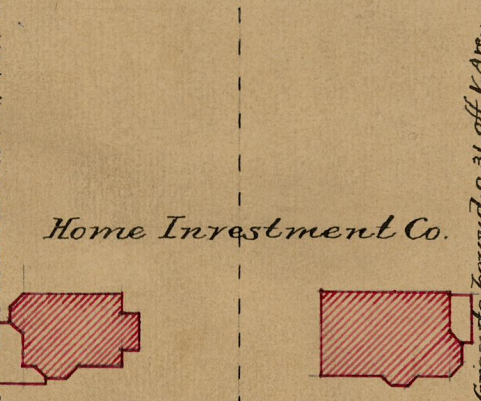
1609.30



NEW YORK AVE.

NEW YORK

Granite bound 0.27 on Va. Ave. 55 = 48.00 9.0. 48

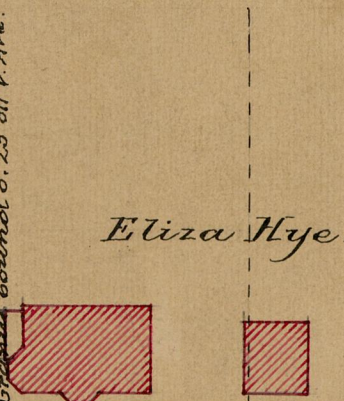


Home Investment Co.

Granite bound 0.31 off Va. Ave.

AVE.

Granite bound 0.23 off Va. Ave.

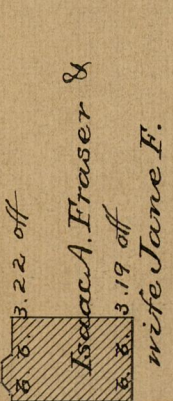


Eliza Hye.

Granite bound 0.26 off Va. Ave.

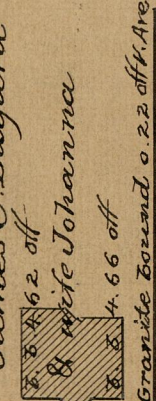
AVE.

Granite bound 0.29 off Va. Ave.



Isaac A. Fraser & wife Jane F.

Granite bound 0.22 off Va. Ave.

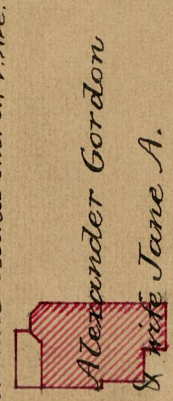


James C. Bayard & wife Johanna

Granite bound 0.22 off Va. Ave.

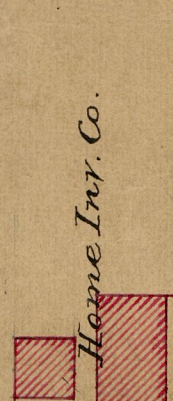
AVE.

Granite bound 0.21 off Va. Ave.



Alexander Gordon & wife Jane A.

Granite bound 0.12 off Va. Ave.



Home Inv. Co.

Granite bound 0.12 off Va. Ave.

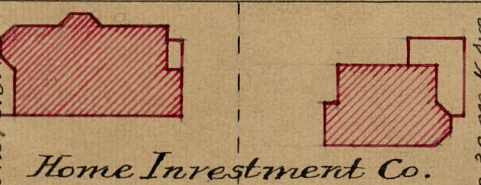
AVE.

VIRGINIA AVENUE

BA = 1613.97

CD = 1604.63

Granite bound 0.27 on Va. Ave. 55 = 48.00 9.0. 48



Home Investment Co.

Granite bound 0.30 on Va. Ave.

INDIANA

Granite bound 0.26 on Va. Ave.

Home Inv. Co.



James E. Hasbun

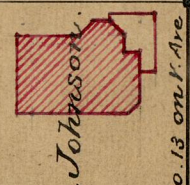
Granite bound 0.23 on Va. Ave.

OHIO

Granite bound 0.22 on Va. Ave.



Home Inv. Co.



Emma A. Johnson

Granite bound 0.13 on Va. Ave.

CALIFORNIA

Granite bound 0.15 on Va. Ave.



Home Inv. Co.

Granite bound 0.12 on Va. Ave.



Rodolph Berry

Granite bound 0.10 on Va. Ave.

VERMONT

84  
B72

OFFICE No 12344  
DRAWER 84