

PROVIDENCE, R.I.
CITY ENGINEER'S OFFICE

STREET LINE DEPT.

Sept. 12, 1894.

023036

PLAT OF
VERMONT AVENUE
FROM MARYLAND AVE. TO EDDY ST.

IN TWO SHEETS

SCALE 60 FEET PER INCH.

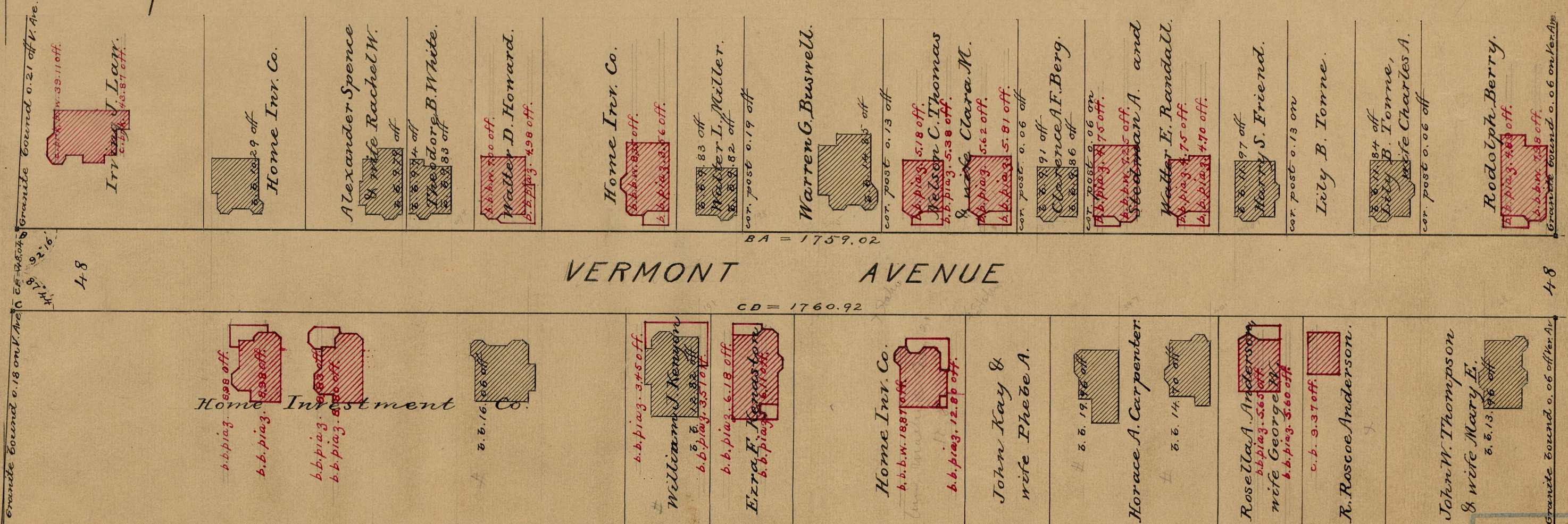
1759.97

Received SEPT 20, 1894



EDDY ST.

VIRGINIA AVE.



Granite bound 0.18 on V. Ave. 4-8
 Granite bound 0.09 on Ver. Ave. 4-8

84
 B-66
 OFFICE No. 12338
 DRAWER 84
 SHEET B-66