

G.W.B. 2431-62-5
F.B.B. XVII 168-9 & Plat Cd.

PROVIDENCE, R.I.
CITY ENGINEER'S OFFICE

STREET LINE DEPT.

Sept. 12, 1894.

023035

PLAT OF VERMONT AVENUE

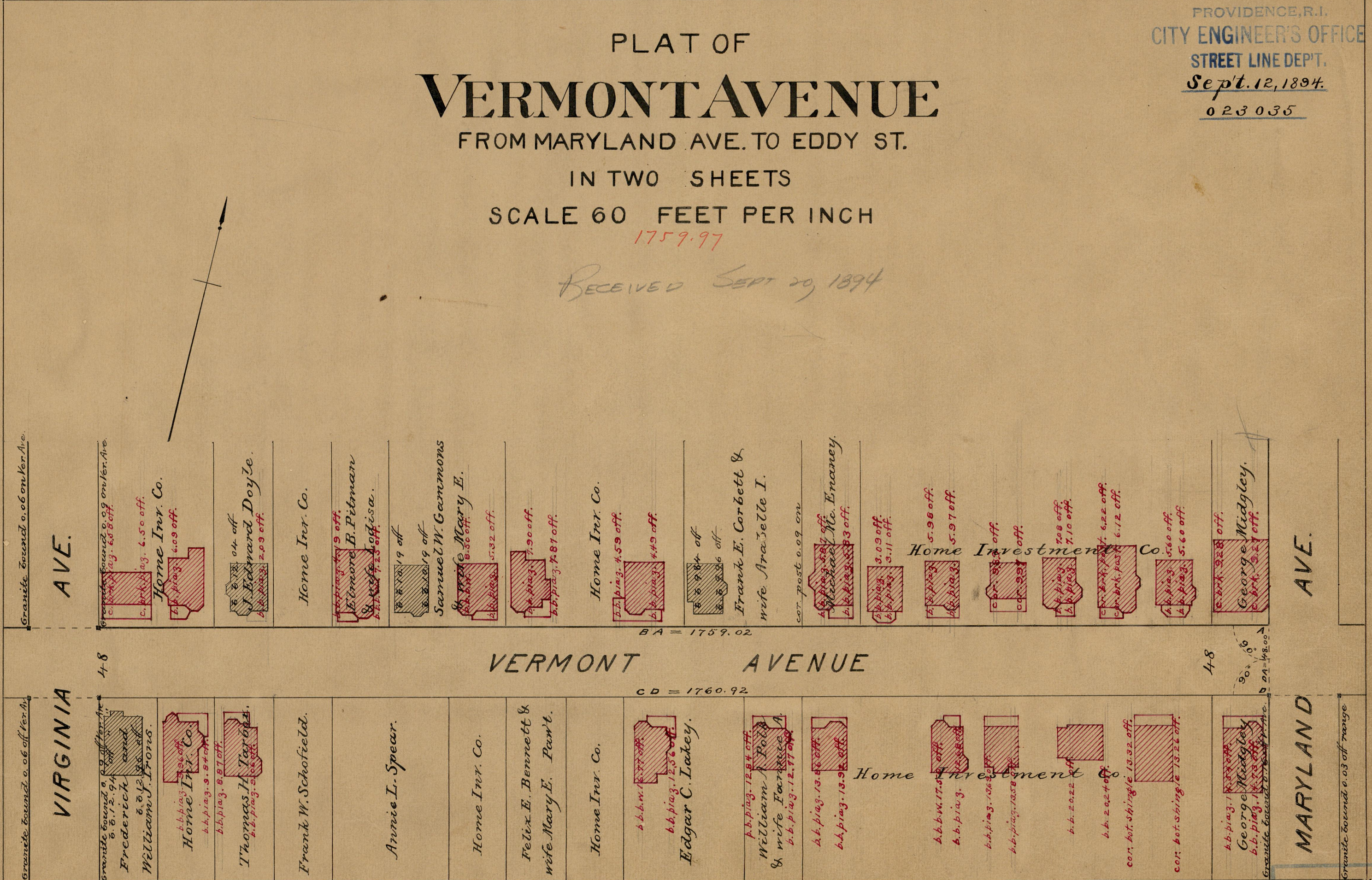
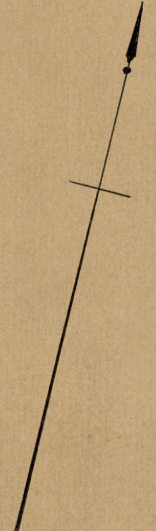
FROM MARYLAND AVE. TO EDDY ST.

IN TWO SHEETS

SCALE 60 FEET PER INCH

1759.97

RECEIVED SEPT 20, 1894



OFFICE No. 12337
DRAWER 84
9-65

84
B-65