

PLAT OF INDIANA AVENUE

FROM MARYLAND AVE. TO EDDY ST.

IN TWO SHEETS

SCALE 60 FEET PER INCH.

1735.28

PROVIDENCE, R.I.
CITY ENGINEER'S OFFICE

STREET LINE DEPT.

Sept. 12, 1894.

023024

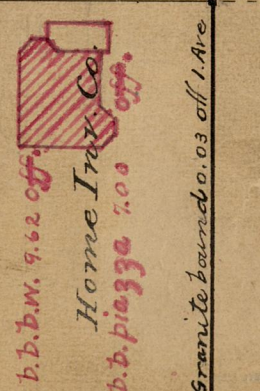
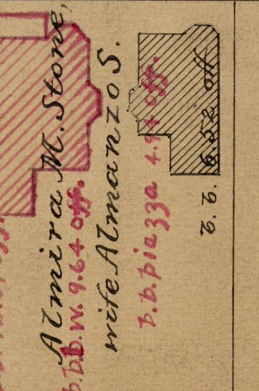
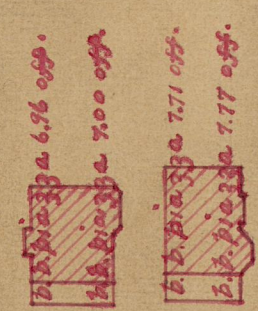
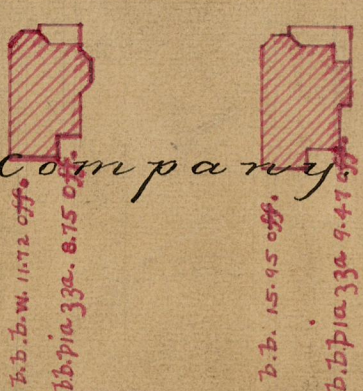
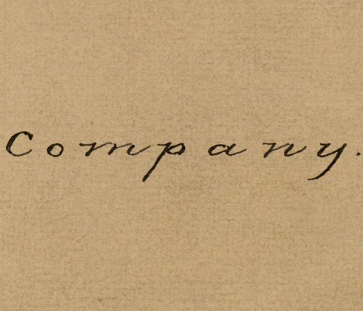
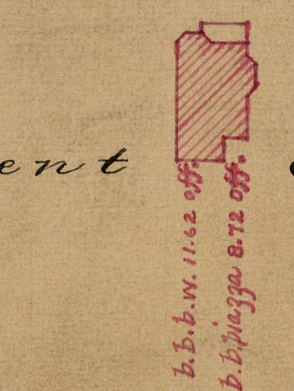
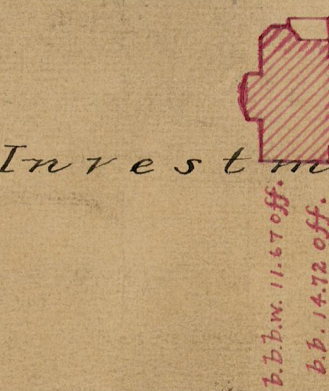
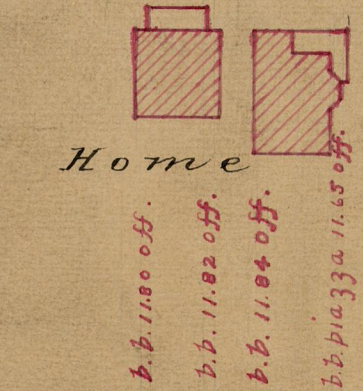
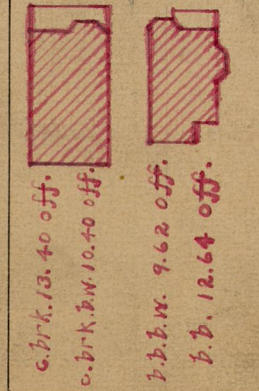
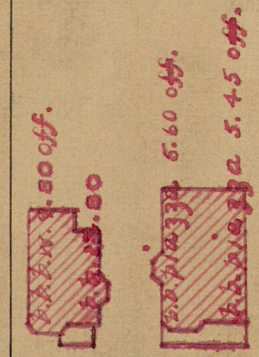


ST.

EDDY

Granite bound 0.04 on 1. Ave
George A. Youlden.
9.76 off

Granite bound on line 1. Ave
George A Youlden
7.11. 73 off



AVE.

VIRGINIA

BA = 1734.33

CD = 1736.23

INDIANA AVENUE

Home Investment Company

Granite bound 0.06 on 1. Ave.

Granite bound 0.05 off 1. Ave.

OFFICE No. 12332
DRAWER 84
SHEET B 60

84
B-60