

PROVIDENCE, R.I.
CITY ENGINEER'S OFFICE
STREET LINE DEPT.

June 29, 1894

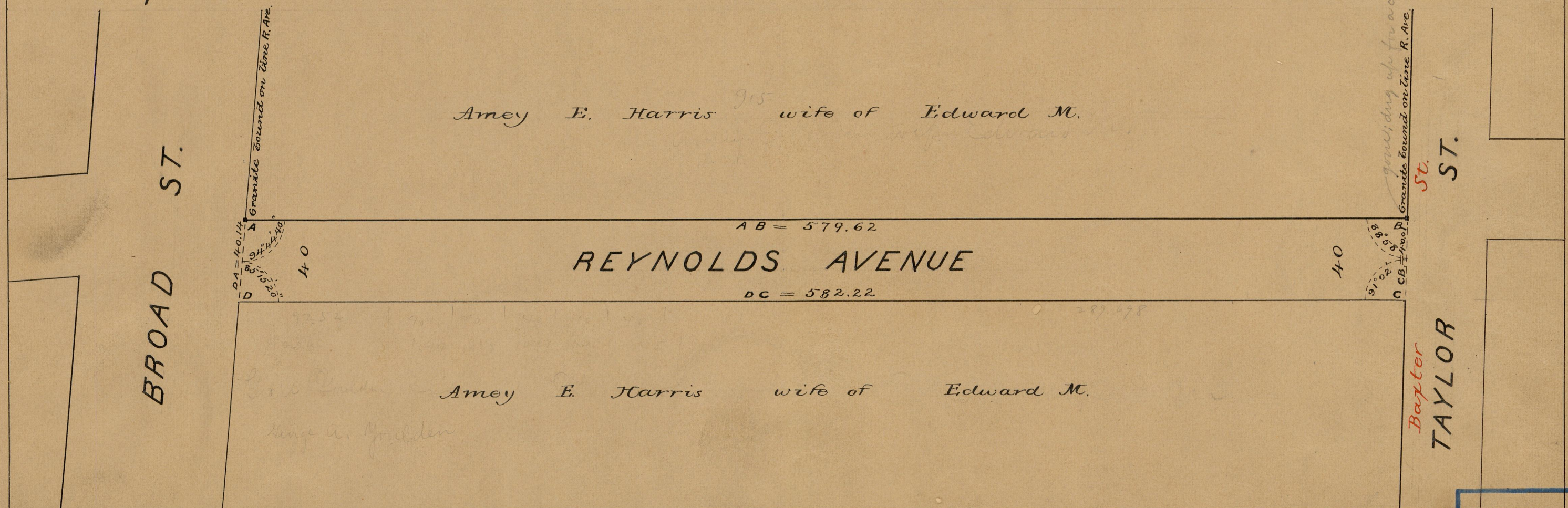
022755

Note, The lines of Reynolds
avenue, as shown, agree with
the deed recorded in Deed
book 388 page 195.

PLAT OF REYNOLDS AVENUE

FROM BROAD ST. TO TAYLOR ST.
DEDICATED FOR HIGHWAY PURPOSES
BY RESOLUTION OF THE CITY COUNCIL
May 5, 1894
SCALE 50 FEET PER INCH.

580.92



84
B-52

OFFICE No.	12282
DRAWN	84
SHEET	B-52