

Note, The lines ABCDE which define the boundaries of Bath street correspond with deeds recorded in Deed Book 387 on pages 274-6.

PLAT OF BATH STREET

FROM ORMS ST. TO SENTER ST.

ORDERED REPAIRED
BY RESOLUTION OF THE
CITY COUNCIL

February 2, 1894

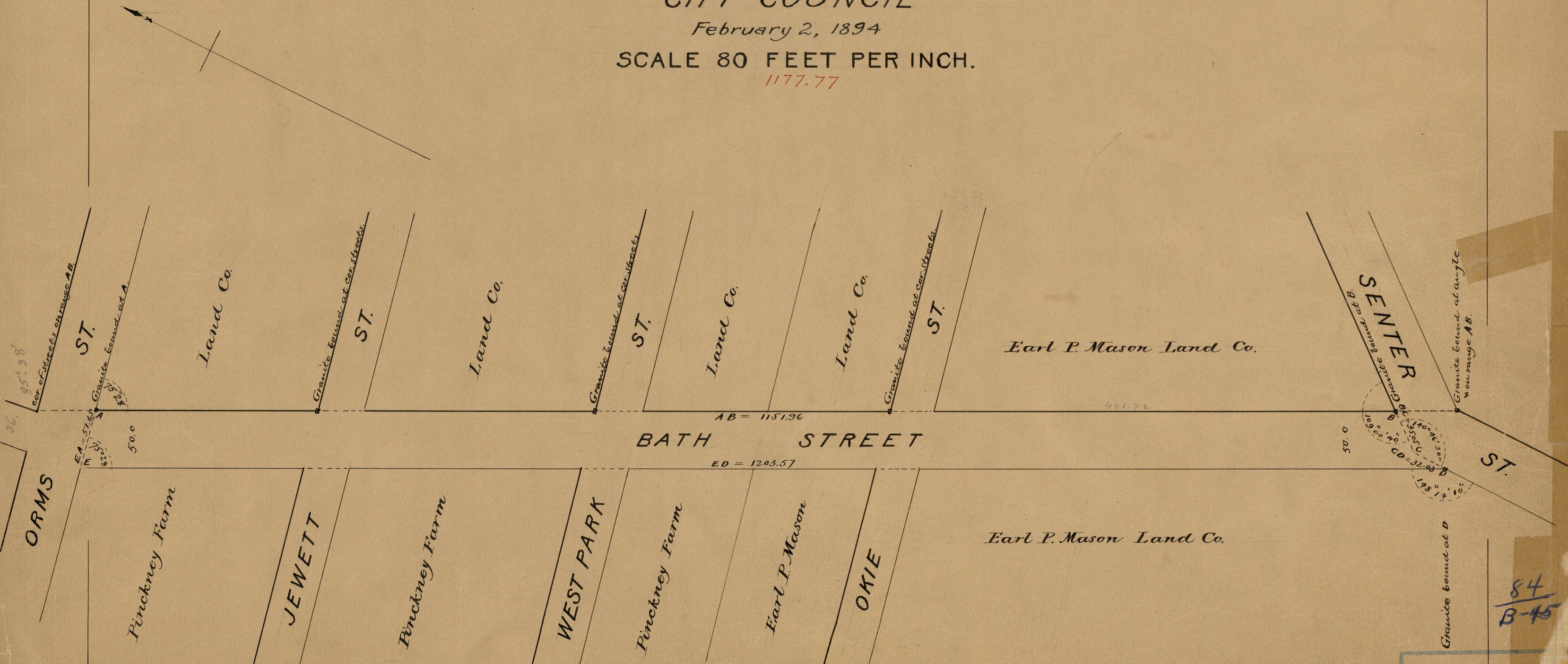
SCALE 80 FEET PER INCH.

1177.77

PROVIDENCE, R.I. 1894
CITY ENGINEER'S OFFICE
STREET LINE DEPT.

May 1, 1894.

022449



OFFICE No. 122
DRAWER 8
SHEET 3

84
B-45

84
B-45