

PROVIDENCE, R.I.
CITY ENGINEER'S OFFICE
STREET LINE DEPT.

May 1, 1894.

022444

PLAT OF WEST PARK STREET

FROM ITS WESTERLY TERMINATION TO VALLEY ST.

ORDERED REPAIRED
BY RESOLUTION OF THE

CITY COUNCIL

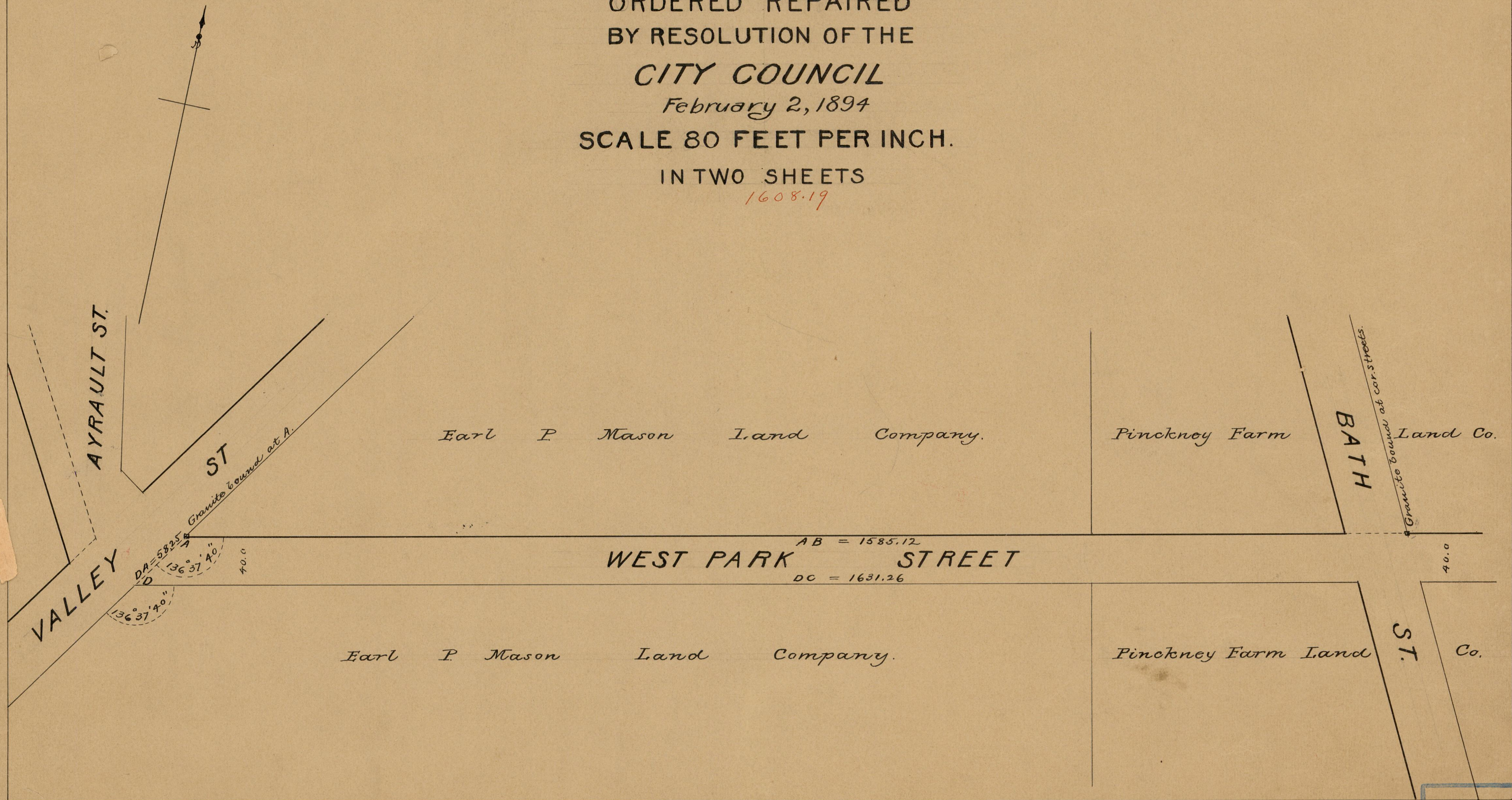
February 2, 1894

SCALE 80 FEET PER INCH.

IN TWO SHEETS

1608.19

Note, The lines ABCD which define the boundaries of West Park street correspond with deeds recorded in Deed Book 387 on pages 274-6.



*84
B-43*

OFFICE No. 1219

DRAWER " 84

SHEET " P B-43