

Feb. 2, 1894

DBF-H-39
PROVIDENCE, R.I.
CITY ENGINEER'S OFFICE
STREET LINE DEPT.
May 1, 1894.
022443

Note, The lines ABCD which define the boundaries of West Park street correspond with deeds recorded in Deed Book 387 on pages 274-6.

PLAT OF WEST PARK STREET

FROM ITS WESTERN TERMINATION TO VALLEY ST.

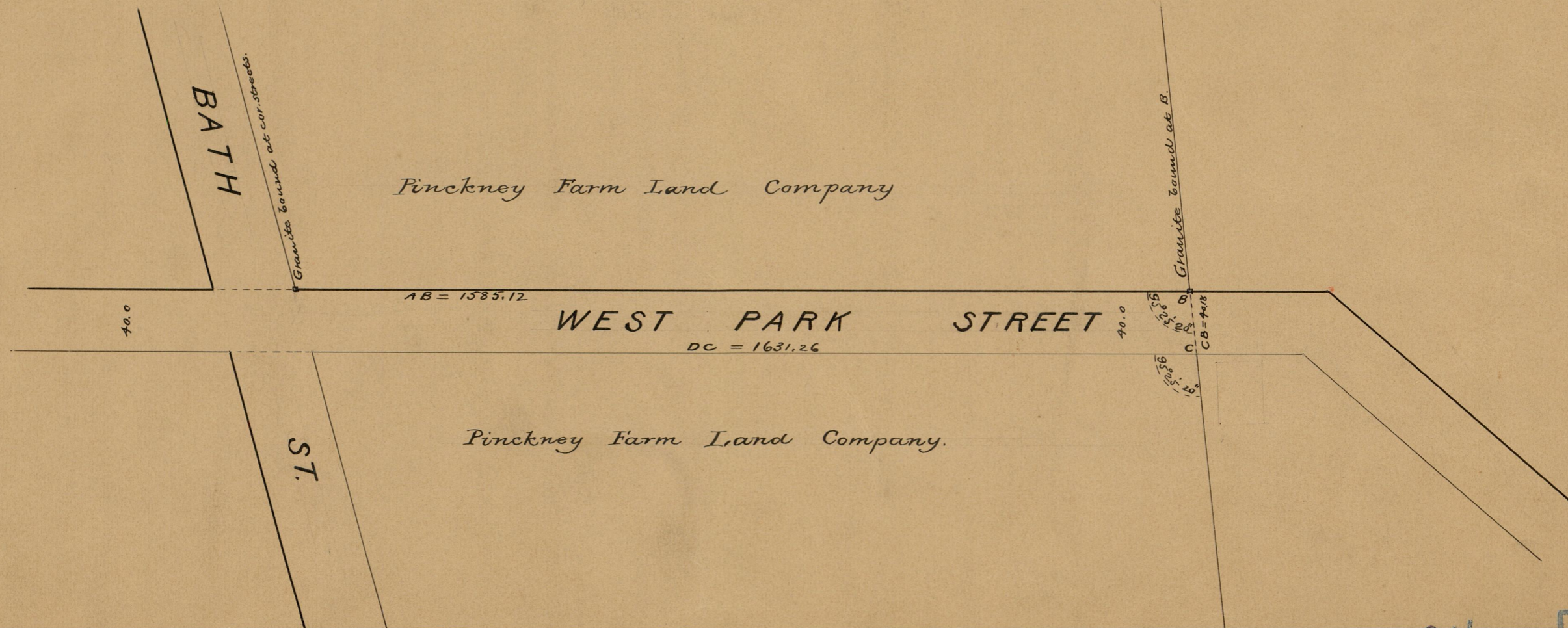
ORDERED REPAIRED
BY RESOLUTION OF THE
CITY COUNCIL

February 2, 1894.

SCALE 80 FEET PER INCH.

IN TWO SHEETS

1608.19



84
B42

84
B-42

OFFICE No.	12193
DRAWER	84
	B-1-2