

D.B.E-H-168

PROVIDENCE, R.I.,
CITY ENGINEER'S OFFICE
STREET LINE DEPT.

May 1, 1894.

022441

Note, The lines ABCD which define
the boundaries of Jewett street
correspond with deeds recorded
in Deed Book 387 on page 274-6.

PLAT OF JEWETT STREET

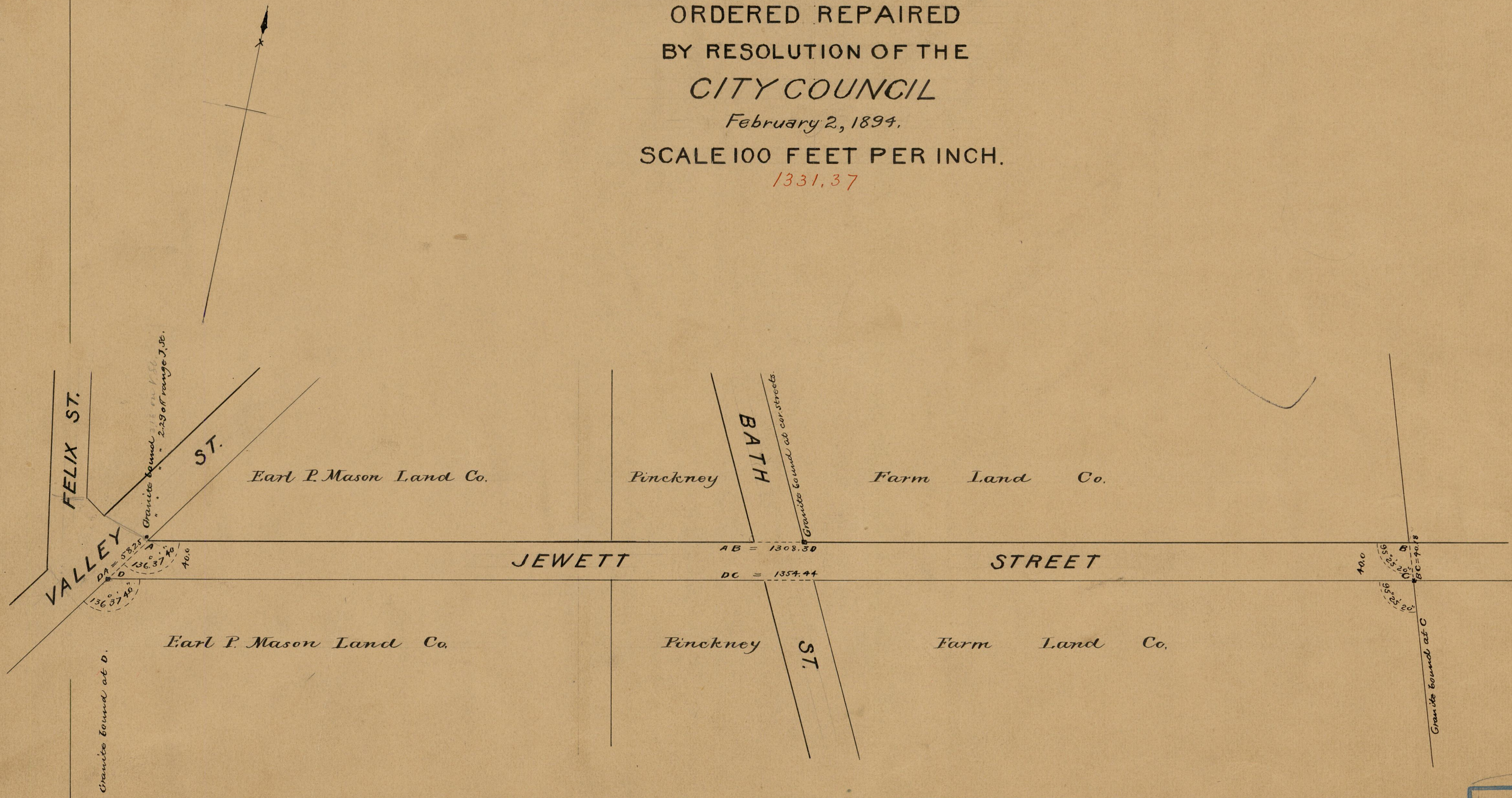
FROM ITS WESTERLY TERMINATION TO VALLEY ST.

ORDERED REPAIRED
BY RESOLUTION OF THE
CITY COUNCIL

February 2, 1894.

SCALE 100 FEET PER INCH.

1331.37



84
B-41

OFFICE No.	12195
DRAWER	84
SHEET	B-41

84-B-41