

John E. May, Esq.

FBB-XVII-131

PROVIDENCE, R.I.
CITY ENGINEER'S OFFICE
STREET LINE DEPT.
Mar. 29, 1894.

022323

PLAT OF MARLBOROUGH ST.

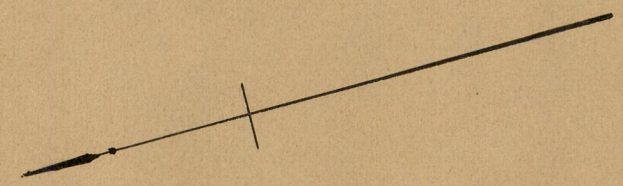
FROM PEARL ST. TO EAST BEACON ST.

SCALE 40 FEET PER INCH.

462.51

471.02

Changed to Landor St. Dec. 7, 1899.



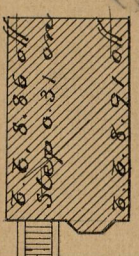
EAST BEACON ST.

MARLBOROUGH STREET

PEARL ST.

*See 81745
con. fence 0.28 off*

*Patrick C. Kelly
& wife
E. B. F. 0.19 off*



*Frank E. Temple
E. B. F. 0.15 on*

Mary C. E. Keenan

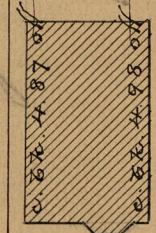
Margaret M. Keel

*Thomas Tobey
& wife*

Nancy K. Bishop

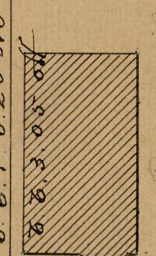
Mary (the late wife of) Chas.

*Daniel J. Whiffle & wife
August 1894*



Margaret M. Doherty

Margaret M. Doherty

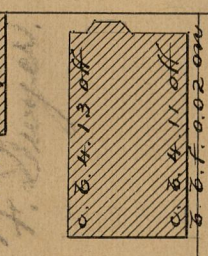


*Charles J. Hooper
E. B. F. 0.04 off M. St.
Granite bound 0.08 off*

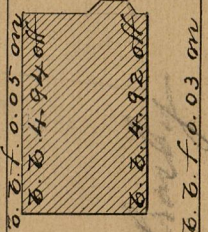
Emma J. Hooper

*E. B. F. 0.10 on M. St.
c. b. 0.09 on*

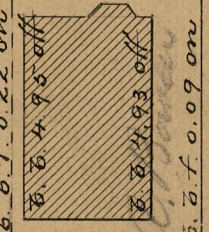
40



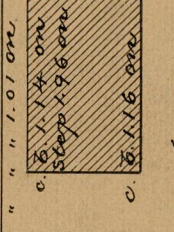
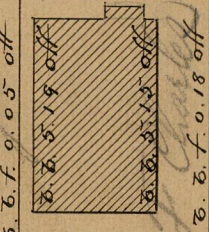
*John F. Simpson
c. b. 0.09 on*



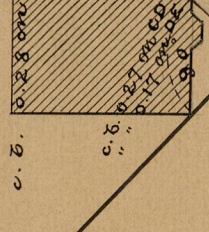
*John T. Thompson
and wife, Kate
c. b. 0.02 on*



*Ann C. [unclear]
c. b. 0.03 on*



*John A. Brown
E. B. F. 0.22 on
c. b. 0.13 off*



*84
B-38*

*84
B-38*

OFFICE No. 1206
DRAWER " 8
SHEET B-38