

Mar. 29, 1894.

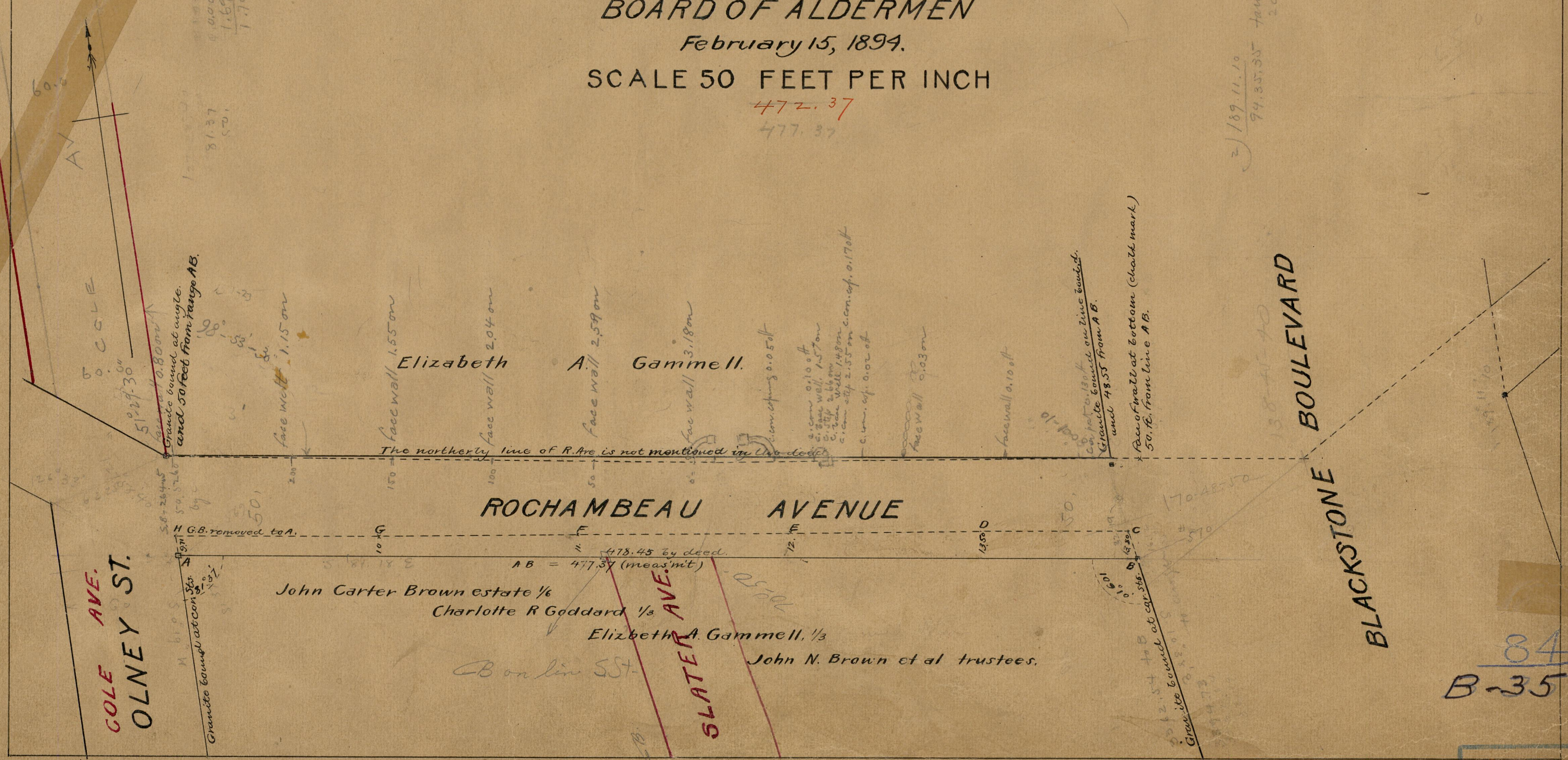
022317

2/189.11.10
74.35.35 + 100. =
89.0491
2.30103
1.205941 = 1607
1612
32119

Note: The lines shown correspond with the deed recorded in Deed Book 386 page 303 and the plat accompanying the same

PLAT OF
ROCHAMBEAU AVENUE
FROM OLNEY STREET TO BLACKSTONE BOULEVARD
DECLARED A PUBLIC HIGHWAY
BY RESOLUTION OF THE
BOARD OF ALDERMEN
February 15, 1894.
SCALE 50 FEET PER INCH

472.37
477.37



COLE AVE.
OLNEY ST.

SLATER AVE.

BLACKSTONE BOULEVARD

ROCHAMBEAU AVENUE

John Carter Brown estate 1/6
Charlotte R. Goddard 1/6
Elizabeth A. Gammell, 1/3
John N. Brown et al trustees.

84
B-35

OFFICE No. 12058
DRAWER 84
SHEET B-35