

MAP OF EXTENSION OF
FRANCIS STREET

DEDICATED FOR HIGHWAY PURPOSES
BY RESOLUTION OF THE CITY COUNCIL

January 30, 1894

SCALE 100 FEET PER INCH

51.0

The letters A, B, C, D and E
indicate the area dedicated.

MAP OF EXTENSION OF
STILLMAN STREET

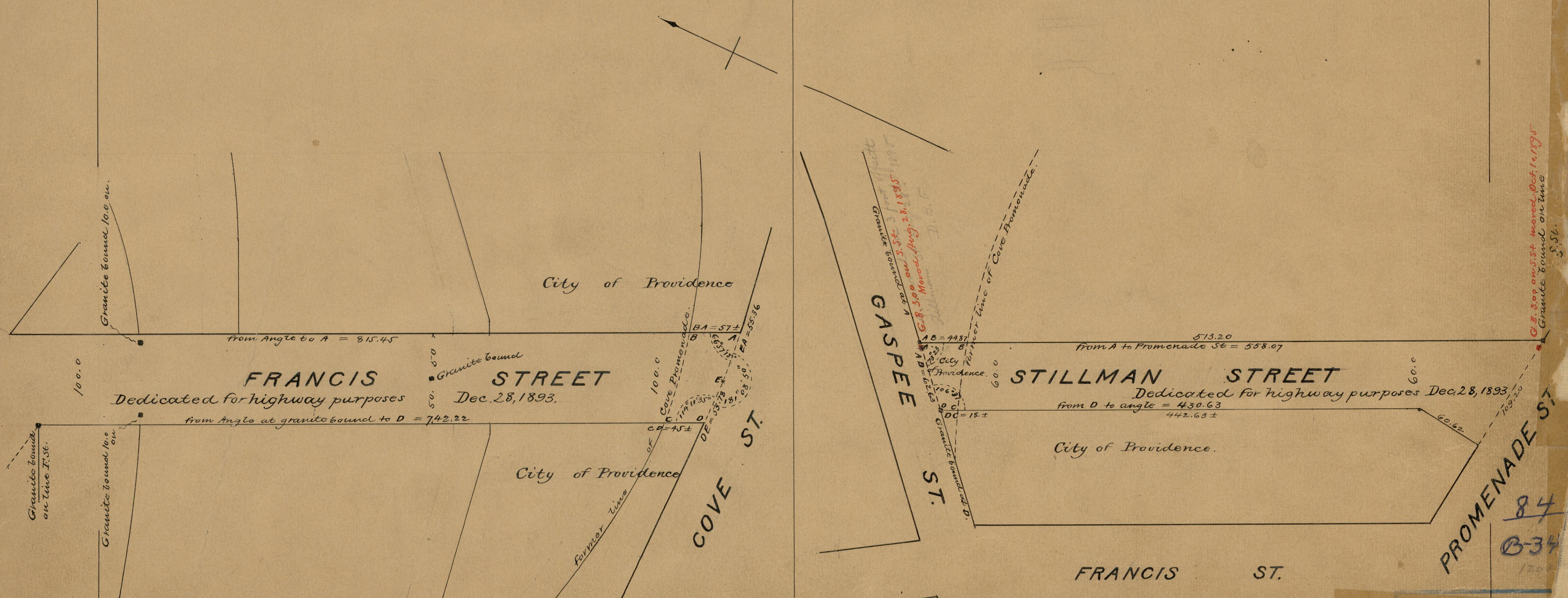
DEDICATED FOR HIGHWAY PURPOSES
BY RESOLUTION OF THE CITY COUNCIL

January 30, 1894

SCALE 80 FEET PER INCH.

31.44

The letters A, B, C and D
indicate the area dedicated.



84-B-34 ⁸⁴/_{B-34}

OFFICE No. 1202
DRAWER
SHEET

84
B-34

G.B. 3.00 on S. St. moved Oct. 1, 1895
Granite bound on line S. St.