

PROVIDENCE, R.I.
CITY ENGINEER'S OFFICE
STREET LINE DEPT.

Jan. 24, 1894

022075

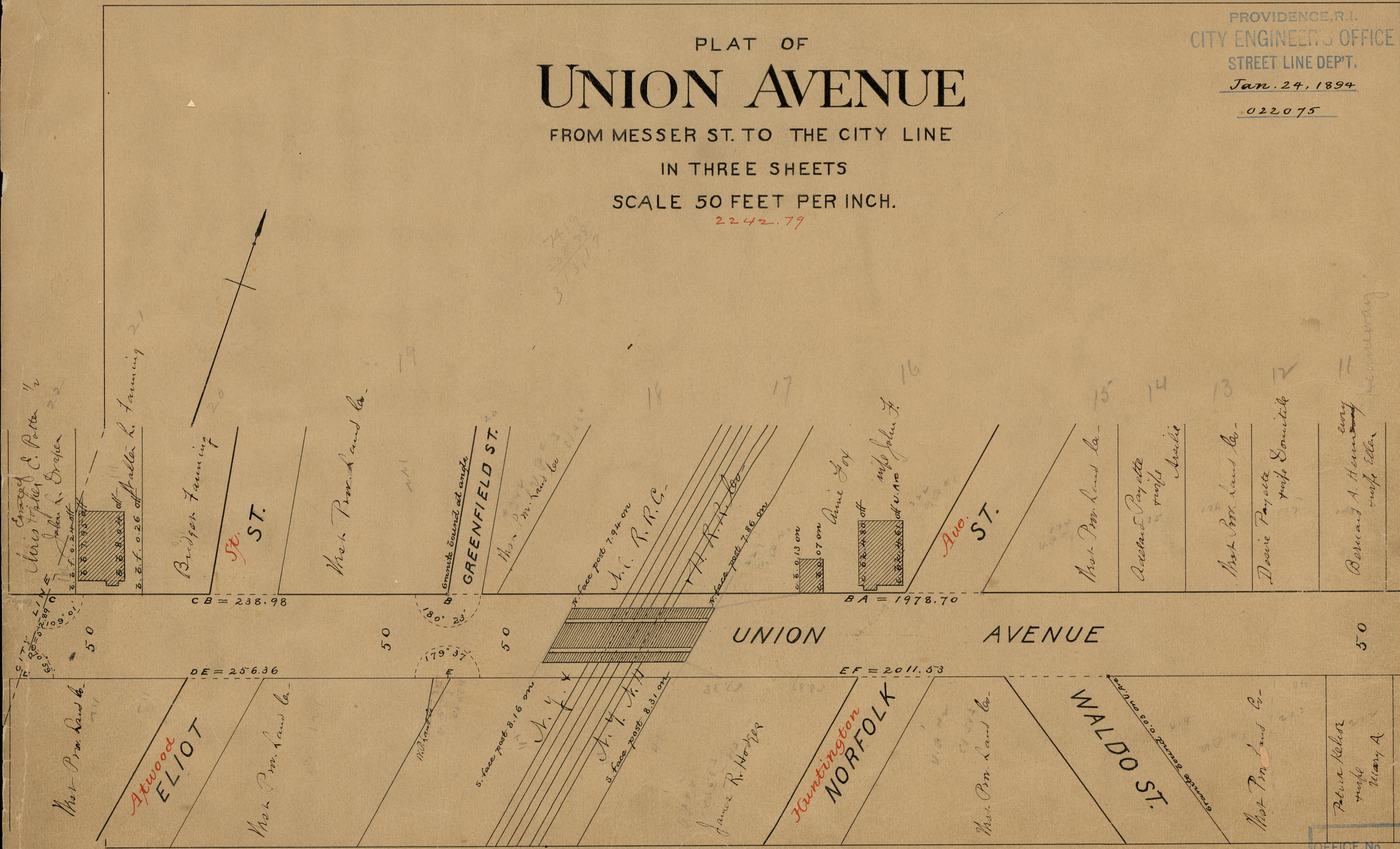
PLAT OF UNION AVENUE

FROM MESSER ST. TO THE CITY LINE

IN THREE SHEETS

SCALE 50 FEET PER INCH.

2242.79



Chris Topper C. Potter 1/2
John L. Drake 22
B. S. F. 0.24 off
B. S. F. 0.26 off
Bridges Farming 20
Messer, Pror, and Co.

50
50
50
50
50

Messer, Pror, and Co.
Atwood ELIOT
Messer, Pror, and Co.

James R. Hodges
Huntingdon NORFOLK
Messer, Pror, and Co.

GREENFIELD ST.
Messer, Pror, and Co.

CB = 238.98
DE = 256.36

James R. Hodges
Huntingdon NORFOLK
Messer, Pror, and Co.

Waldo ST.
Messer, Pror, and Co.

Union AVENUE
Messer, Pror, and Co.

BA = 1978.70
EF = 2011.53

James R. Hodges
Huntingdon NORFOLK
Messer, Pror, and Co.

Waldo ST.
Messer, Pror, and Co.

Union AVENUE
Messer, Pror, and Co.

BA = 1978.70
EF = 2011.53

James R. Hodges
Huntingdon NORFOLK
Messer, Pror, and Co.

Waldo ST.
Messer, Pror, and Co.

Union AVENUE
Messer, Pror, and Co.

BA = 1978.70
EF = 2011.53

James R. Hodges
Huntingdon NORFOLK
Messer, Pror, and Co.

Waldo ST.
Messer, Pror, and Co.

Union AVENUE
Messer, Pror, and Co.

BA = 1978.70
EF = 2011.53

James R. Hodges
Huntingdon NORFOLK
Messer, Pror, and Co.

Waldo ST.
Messer, Pror, and Co.

Union AVENUE
Messer, Pror, and Co.

BA = 1978.70
EF = 2011.53

James R. Hodges
Huntingdon NORFOLK
Messer, Pror, and Co.

Waldo ST.
Messer, Pror, and Co.

Union AVENUE
Messer, Pror, and Co.

BA = 1978.70
EF = 2011.53

James R. Hodges
Huntingdon NORFOLK
Messer, Pror, and Co.

Waldo ST.
Messer, Pror, and Co.

Union AVENUE
Messer, Pror, and Co.

BA = 1978.70
EF = 2011.53

James R. Hodges
Huntingdon NORFOLK
Messer, Pror, and Co.

Waldo ST.
Messer, Pror, and Co.

Union AVENUE
Messer, Pror, and Co.

BA = 1978.70
EF = 2011.53

James R. Hodges
Huntingdon NORFOLK
Messer, Pror, and Co.

Waldo ST.
Messer, Pror, and Co.

84-B-28

OFFICE No. 11997
DRAWER " 84
SHEET " B-3

84
B-28