

C.C. Manning
7B-170
E.B. 1879-51

PLAT OF
CROSS STREET

FROM CHARLES ST. TO WEST RIVER ST.

IN TWO SHEETS.

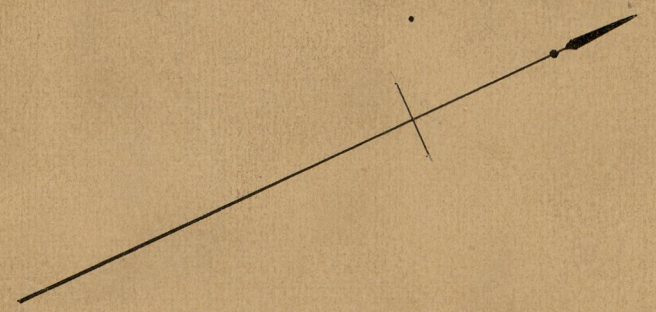
SCALE 40 FEET PER INCH

920.99

PROVIDENCE, R.I.
CITY ENGINEER'S OFFICE
STREET LINE DEPT.

Nov. 22, 1893

021905



Corliss Steam Engine Company

CHARLES ST.

CROSS STREET

WILCOX ST.

Corliss Steam Engine Co.

Corliss Steam Engine Co.

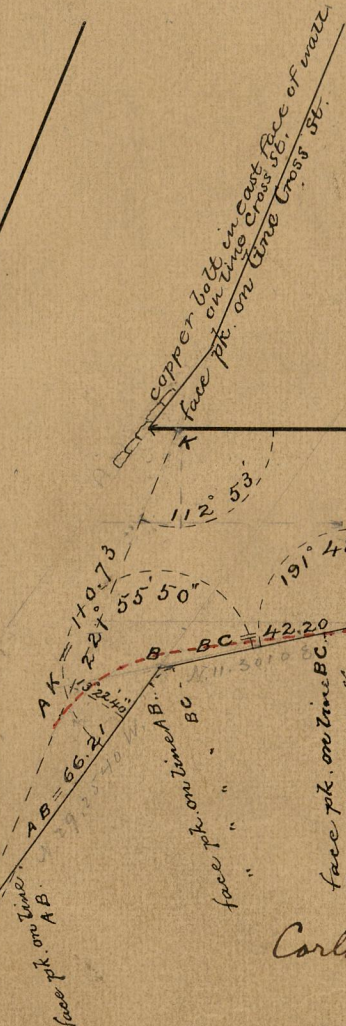
Broken red line shows former location of fence (M.W. Schofield Dec. 1894)
(this note added June 29, 1894)

KJ = 251.50

CD = 214.15

J1 = 178.58

DE = 160.74



84
B-21

11959
84
B-21

25-33

B-21