

J. F. McKim Eng.

DBF-H-30

PROVIDENCE, R.I.
CITY ENGINEER'S OFFICE
STREET LINE DEPT.

Sept 27, 1893

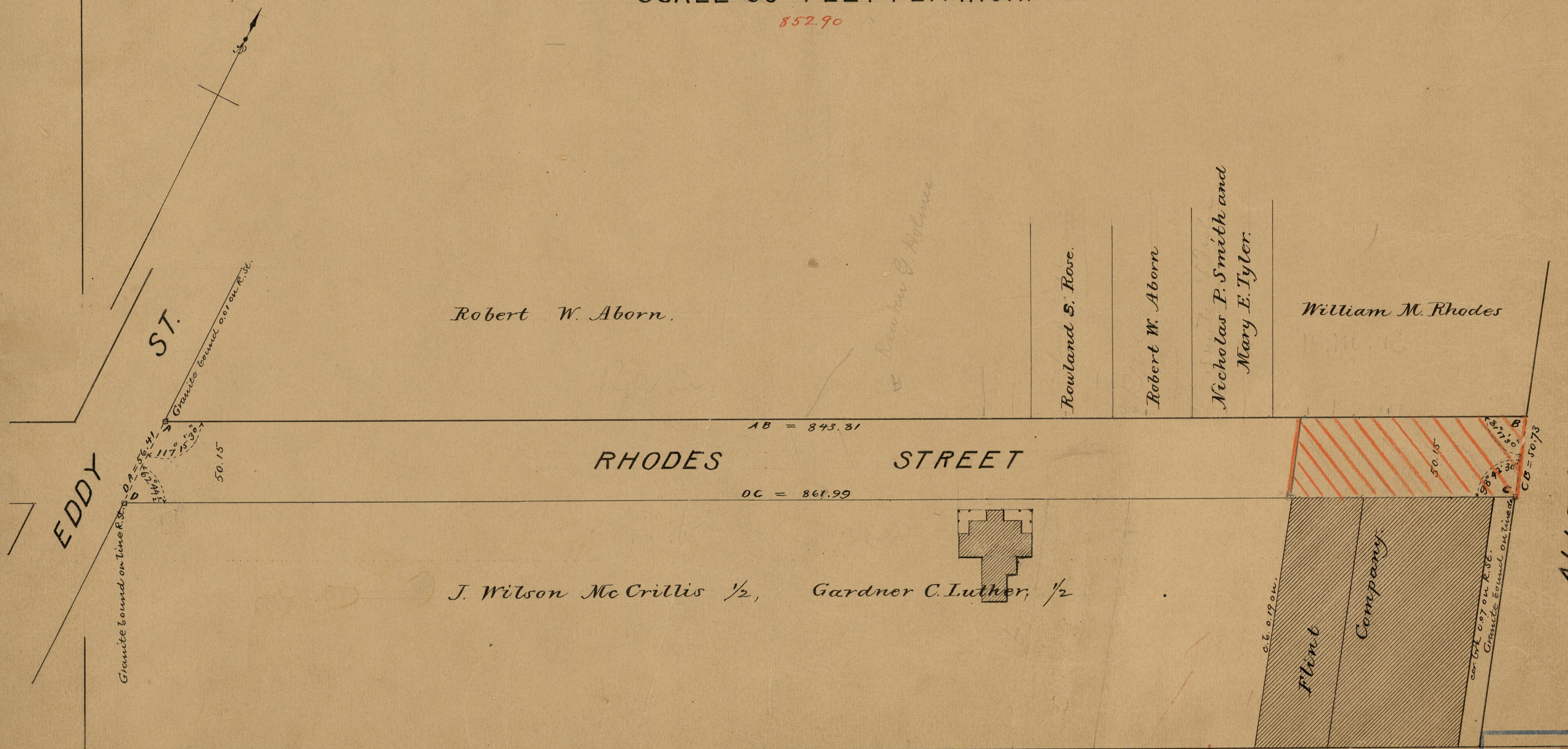
021575

PLAT OF RHODES STREET

FROM EDDY STREET TO ALLENS AVE.

SCALE 60 FEET PER INCH.

852.90



Robert W. Aborn.

Rowland S. Rose.

Robert W. Aborn

Nicholas P. Smith and
Mary E. Tyler.

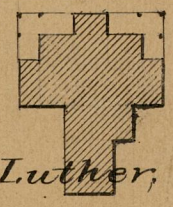
William M. Rhodes

RHODES STREET

AB = 843.81

DC = 861.99

J. Wilson McCrillis 1/2, Gardner C. Luther, 1/2



Flint
Company

OFFICE No.	11866
DRAWER	84
SHEET	5 - 11