

PLAT OF ALTHEA STREET

FROM CRANSTON ST. TO UNION AVE.

IN TWO SHEETS.

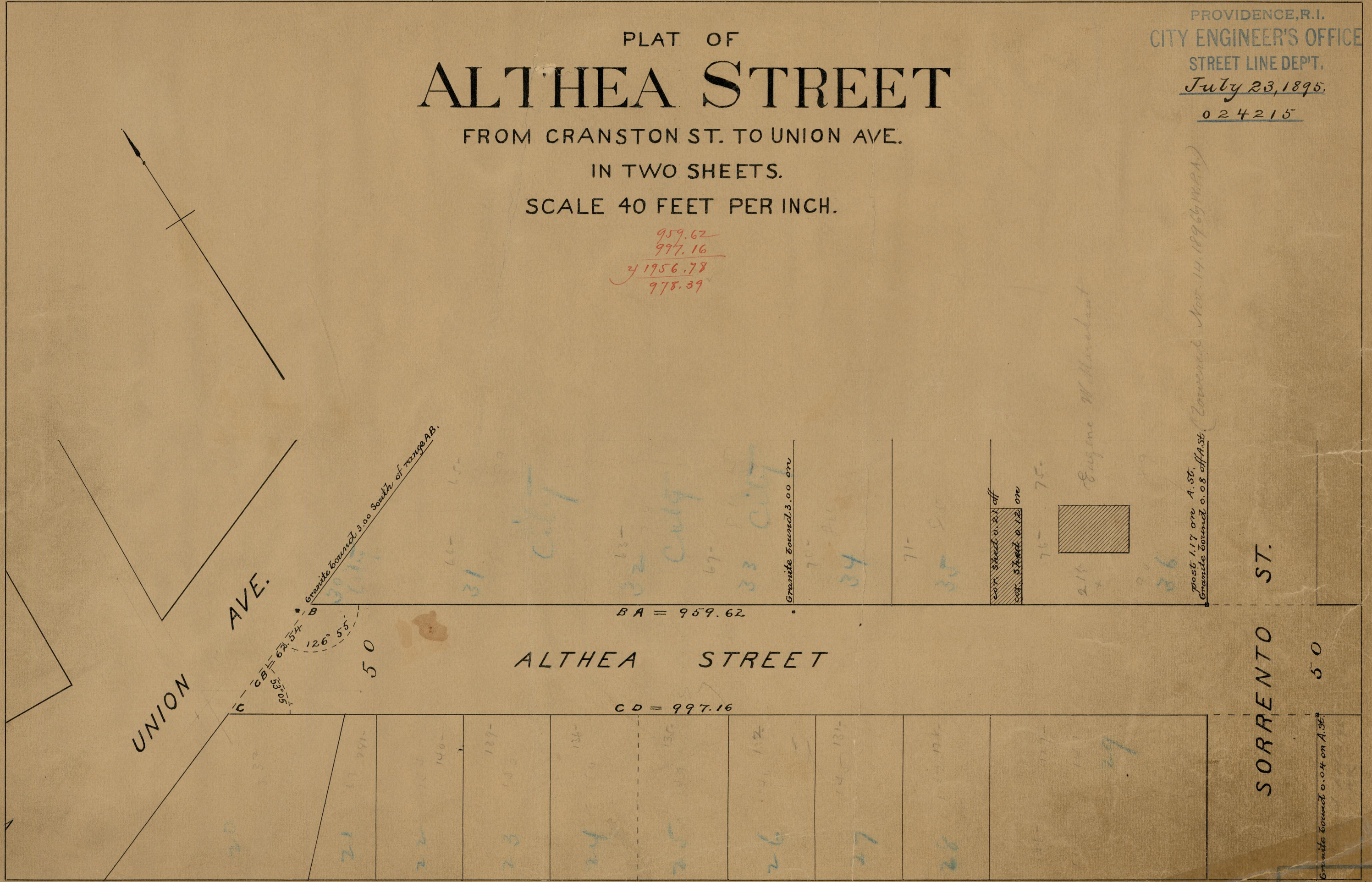
SCALE 40 FEET PER INCH.

PROVIDENCE, R.I.
CITY ENGINEER'S OFFICE
STREET LINE DEPT.

July 23, 1895.

024215

959.62
997.16
41956.78
978.39



UNION AVE.

ALTHEA STREET

SORRENTO ST.

BA = 959.62

CD = 997.16

Granite bound 3.00 South of range A.B.

Granite bound 3.00 on

207' Street 0.21 off
207' Street 0.12 on

post 117 on A. St.
Granite bound 0.08 off A. St.

Granite bound 0.04 on A. St.

Eugene W. Woodland

Covered Nov. 14, 1896 by M.P.A.

84
B100

12646
84 B100

OFFICE No. 12646
DRAWER 84

84
B-100

B-100