

Note, The lines given agree with plat of Francis Street presented to the board of aldermen Dec. 17 1896.

PLAT OF FRANCIS STREET

FROM GASPEE ST. TO SMITH ST.

IN TWO SHEETS.

SCALE 50 FEET PER INCH.

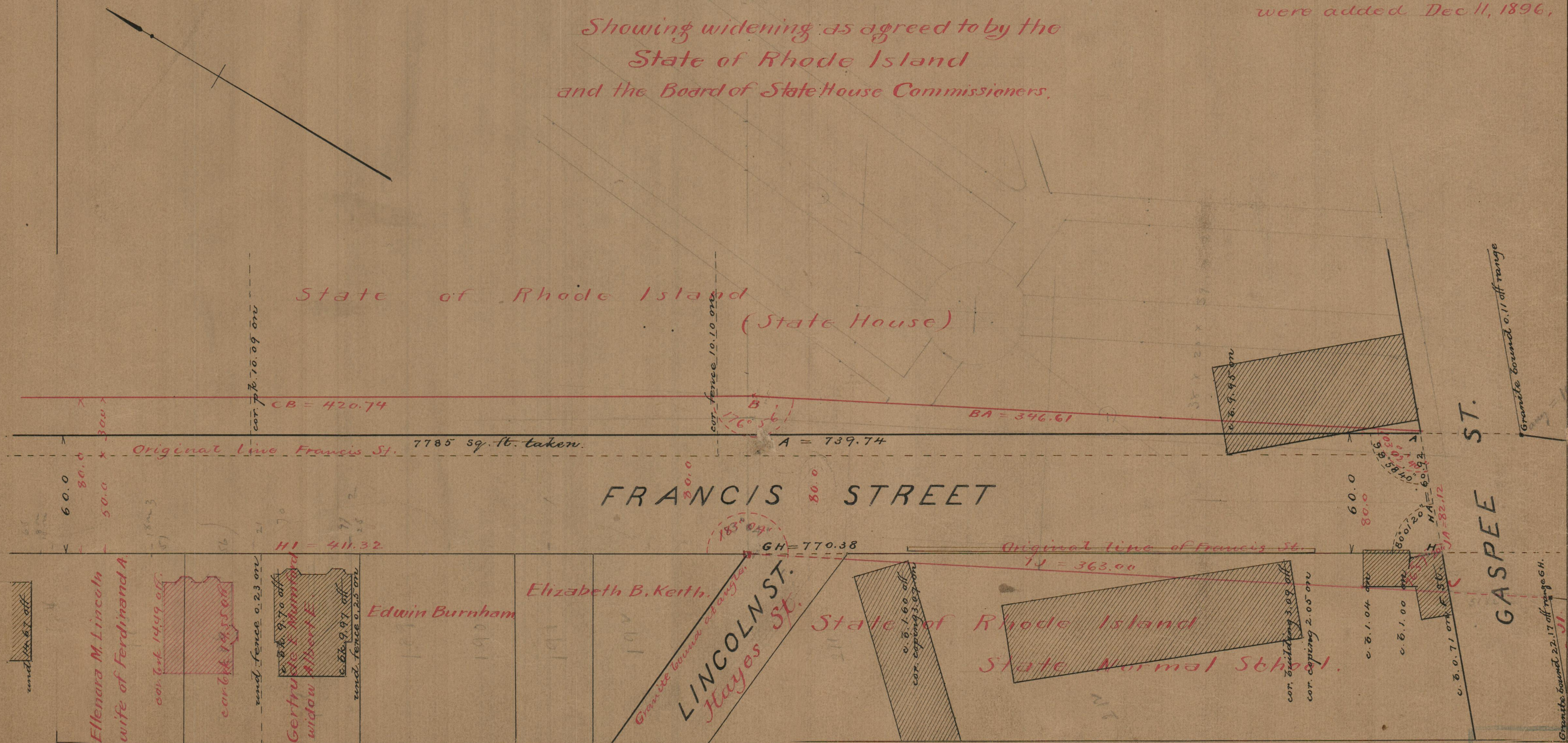
Showing widening as agreed to by the State of Rhode Island and the Board of State House Commissioners.

PROVIDENCE, R.I.
CITY ENGINEER'S OFFICE
STREET LINE DEPT.

Apr. 7, 1893.

020747

Notes in red were added Dec 11, 1896.



GASPEE ST.
Granite tower 0.11 off range

GASPEE ST.
Granite tower 22.17 off range G.H.
Do survey 11

OFFICE No. 11675
DRAWER " 84
SHEET " 80

84
A-80

A-80