

PLAT OF ADELAIDE AVENUE

FROM RESERVOIR AVE TO CRESCENT ST.

IN TWO SHEETS

SCALE 60 FEET PER INCH.

1484.24

PROVIDENCE, R.I.
CITY ENGINEER'S OFFICE

STREET LINE DEPT.

Nov. 12, 1892.

020235

84
A-44

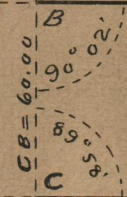
Granite bound on range AB.

CRESCENT ST.

HOLBROOK ST.

Granite bound on line A.A.

Gorham Mfg. Co.



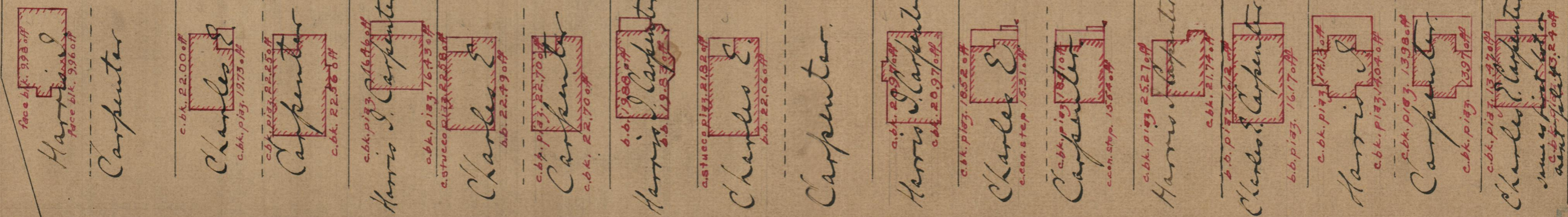
BA = 1500.28

ADELAIDE AVENUE

60.0

CD = 1468.21

Granite bound on range CD.



A-44

84
A-44

184