

No Notes found Refer to HES
PROVIDENCE, R.I.
CITY ENGINEER'S OFFICE
STREET LINE DEPT.
July 20 1893
021237

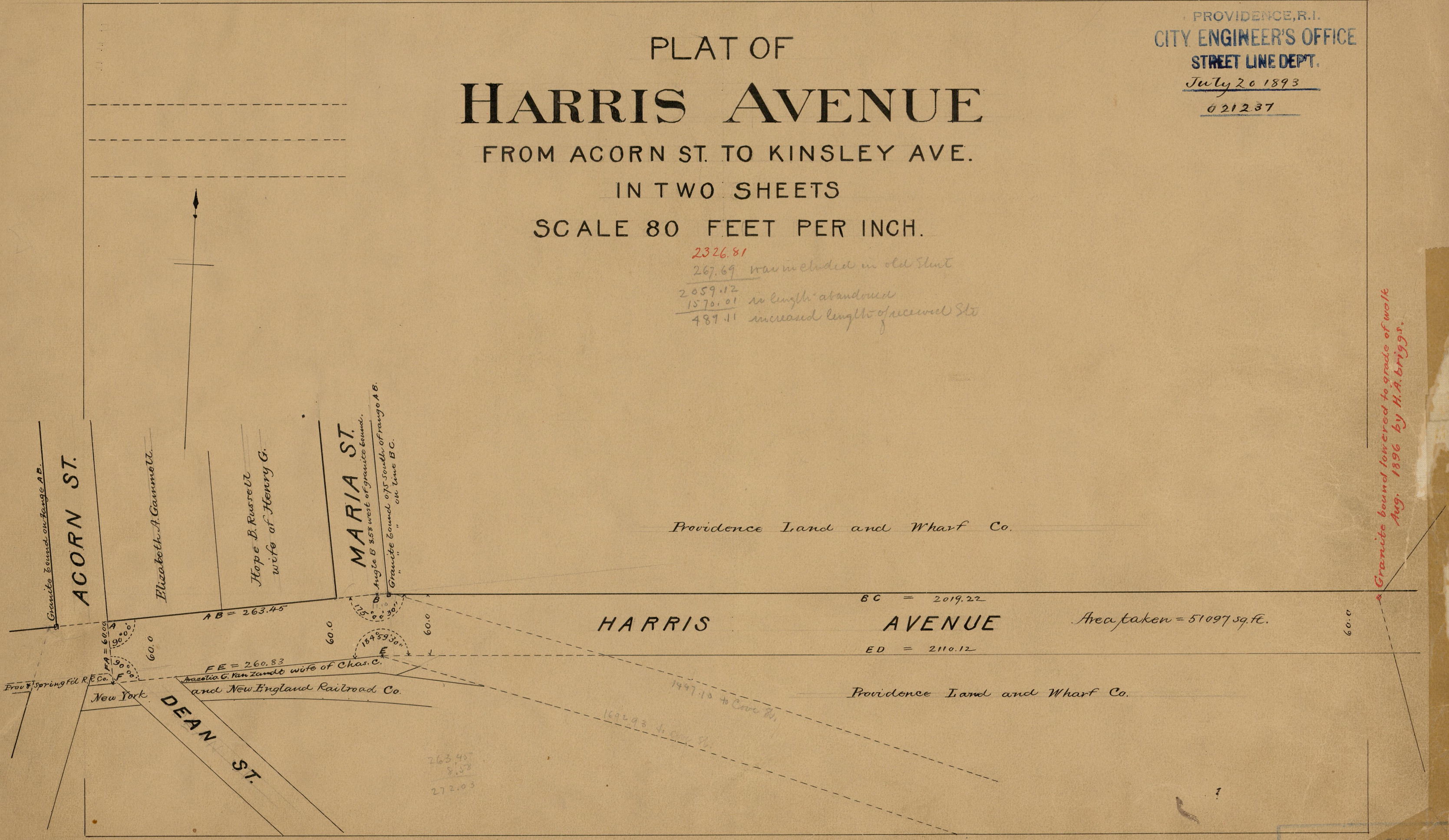
PLAT OF
HARRIS AVENUE

FROM ACORN ST. TO KINSLEY AVE.

IN TWO SHEETS

SCALE 80 FEET PER INCH.

2326.81
267.69 was included in old street
2059.12
1570.01 in length abandoned
489.11 increased length of present St.



Providence Land and Wharf Co.

BC = 2019.22

HARRIS AVENUE

Area taken = 51097 sq. ft.

ED = 2110.12

Providence Land and Wharf Co.

From Spring Hill R.R. Co. New York and New England Railroad Co.

DEAN ST.

263.45
8.58
272.03

Granite bound lowered to grade of walk Aug. 1896 by H.A. Briggs.

OFFICE No. 11744
DRAWER " 84
SHEET A-96