

C. C. Mansfield Eng.

FRB-XVII-93

PROVIDENCE, R.I.
CITY ENGINEER'S OFFICE
STREET LINE DEPT.

July 7, 1893.

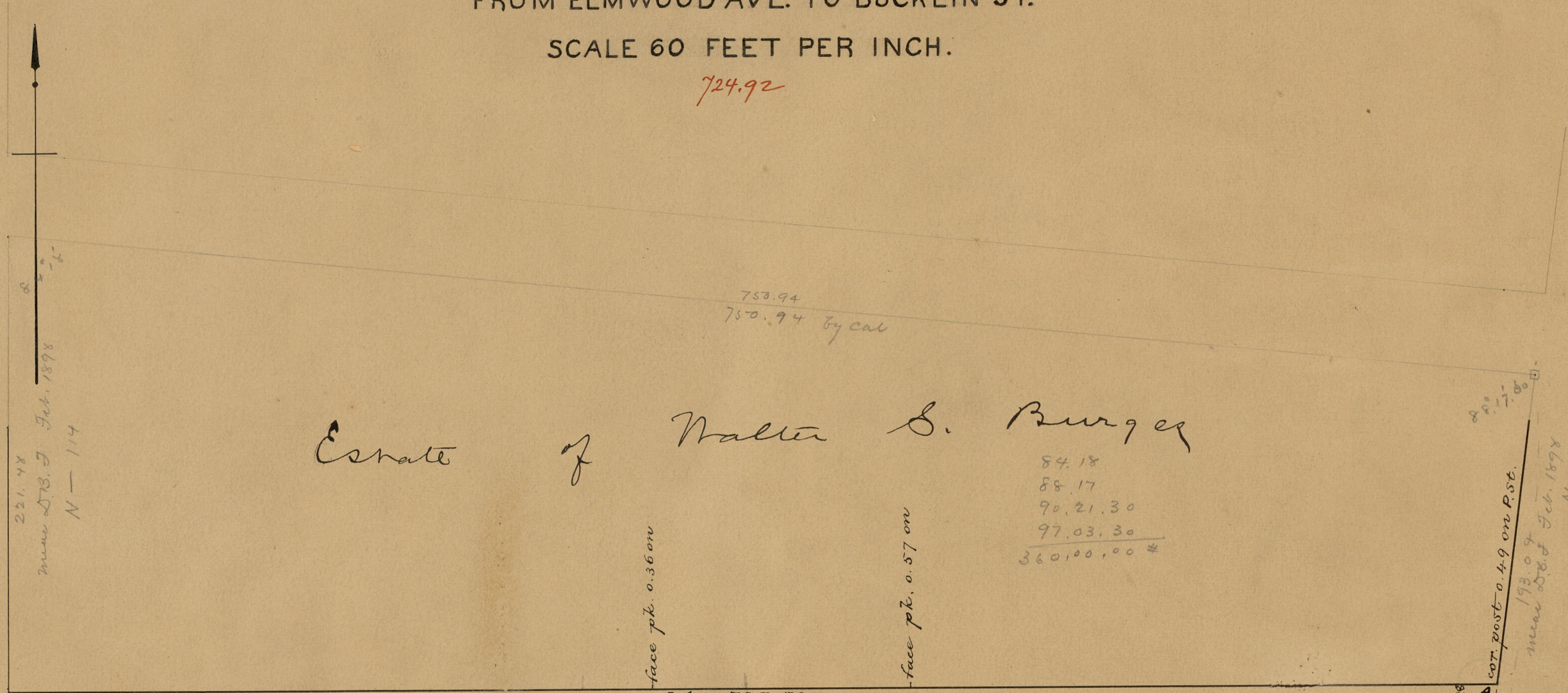
021173

PLAT OF PEACE STREET

FROM ELMWOOD AVE. TO BUCKLIN ST.

SCALE 60 FEET PER INCH.

724.92



BUCKLIN ST.

221.48
mean D.B. Feb. 1898
N-114

Estate of Walter S. Burger

face pk. 0.36 on

face pk. 0.57 on

193.09
mean D.B. Feb. 1898
N-115
cot. post 0.49 on P. St.

ELMWOOD AVE.

PEACE STREET

BA = 727.52 #

CD = 722.32 #

Granite bound on line P. St.
4-0

Estate of Walter S. Burger

Granite bound 0.10 off

Elias H. Chapman
E. S. 7.83 off
E. S. 7.83 off

Chas. H. Carter

E. S. 8.04 off
E. S. 8.09 off
E. S. 7.02 off

Ara Lyman
E. S. 14.84 off

Daniel J. Lully

Granite bound on line P. St.
4-0

84
A-95

OFFICE No. 11736
DRAWER " 84
SHEET " A-95