

FBA
FR 2711-96

PROVIDENCE, R.I.
CITY ENGINEER'S OFFICE
STREET LINE DEPT.

July 7, 1893.

021168

PLAT OF
SEVENTH STREET

FROM SUMMIT AVE. TO PAWTUCKET AVE.

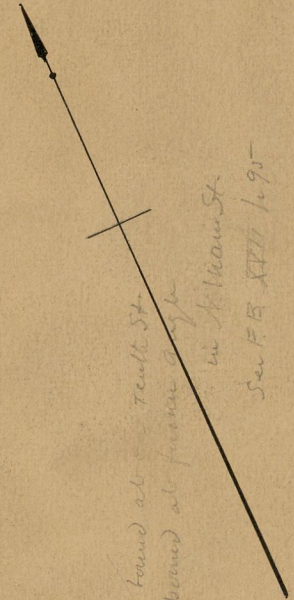
IN TWO SHEETS.

SCALE 40 FEET PER INCH.

1055.47

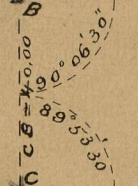
PAWTUCKET AVE.

North Main St.



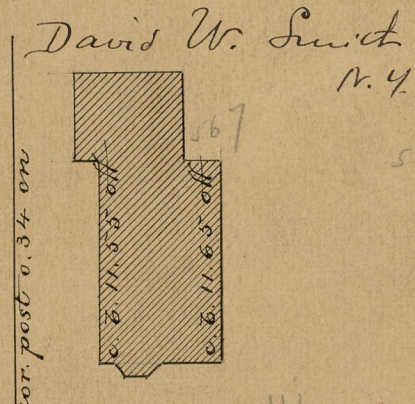
200.36 to found at Summit St.
176.00 to found at former angle
in N. Main St.
See P. B. XVII 1695

C. B. 3,000.00
Gran. bound at B.



Reliance Hall

477

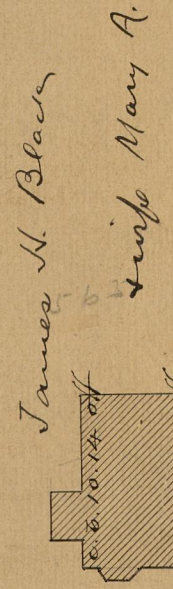


Nery Berry
wife Mary A.

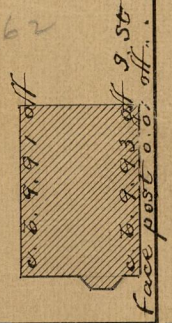
cor. post 0.16 on

John S. Cottrell,
Trustee

cor. fence 0.22 on



John W. Hogan



4-0

SEVENTH STREET

BA = 1055.43

CD = 1055.51

Edward Gallagher and Bernard Gallagher

post 4.54 off

450

AVE.

HIGHLAND

84
A-93

OFFICE No. 11734
DRAWER " 84
SHEET " 2-93