

C. C. Mumford

F.B.B.-XVII-95-96

PROVIDENCE, R.I.  
CITY ENGINEER'S OFFICE  
STREET LINE DEPT.

July 7, 1893.

021167

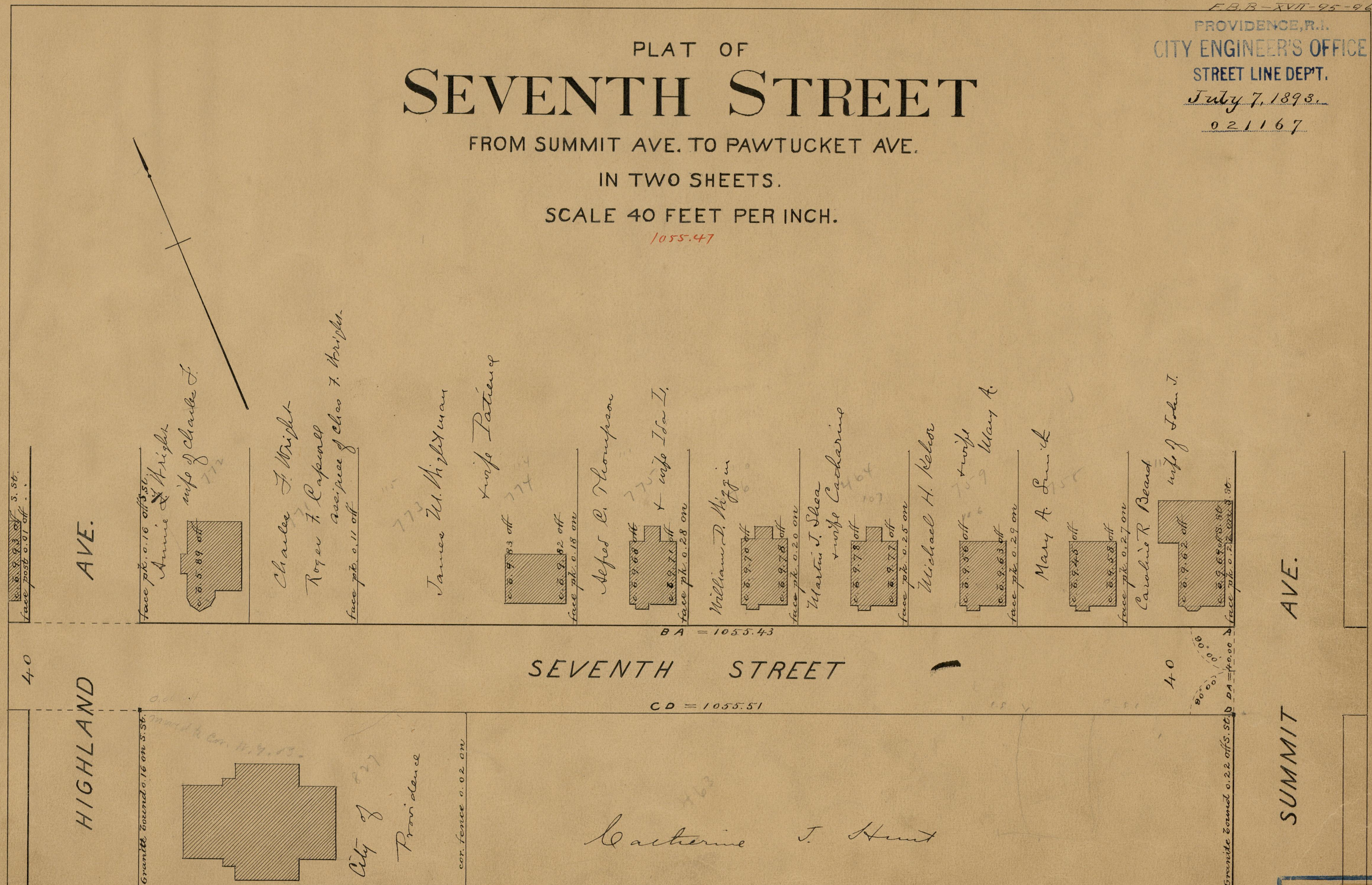
# PLAT OF SEVENTH STREET

FROM SUMMIT AVE. TO PAWTUCKET AVE.

IN TWO SHEETS.

SCALE 40 FEET PER INCH.

1055.47



AVE.

HIGHLAND

AVE.

SUMMIT

SEVENTH STREET

BA = 1055.43

CD = 1055.51

Catherine J. Hunt

OFFICE No. 11733  
 DRAWER " 84  
 SHEET " A-92

84  
A 92