

FBB-XVII-17

R.G. Place
A.E. West 87 May 1892

PROVIDENCE, R.I.
CITY ENGINEER'S OFFICE
STREET LINE DEPT.
July 6, 1892

019565 01956

Providence R.I.
This plat accompanies
our report of this date.

PLAT OF

STEERE AVENUE

FROM MANTON AVE. TO AMHERST ST.

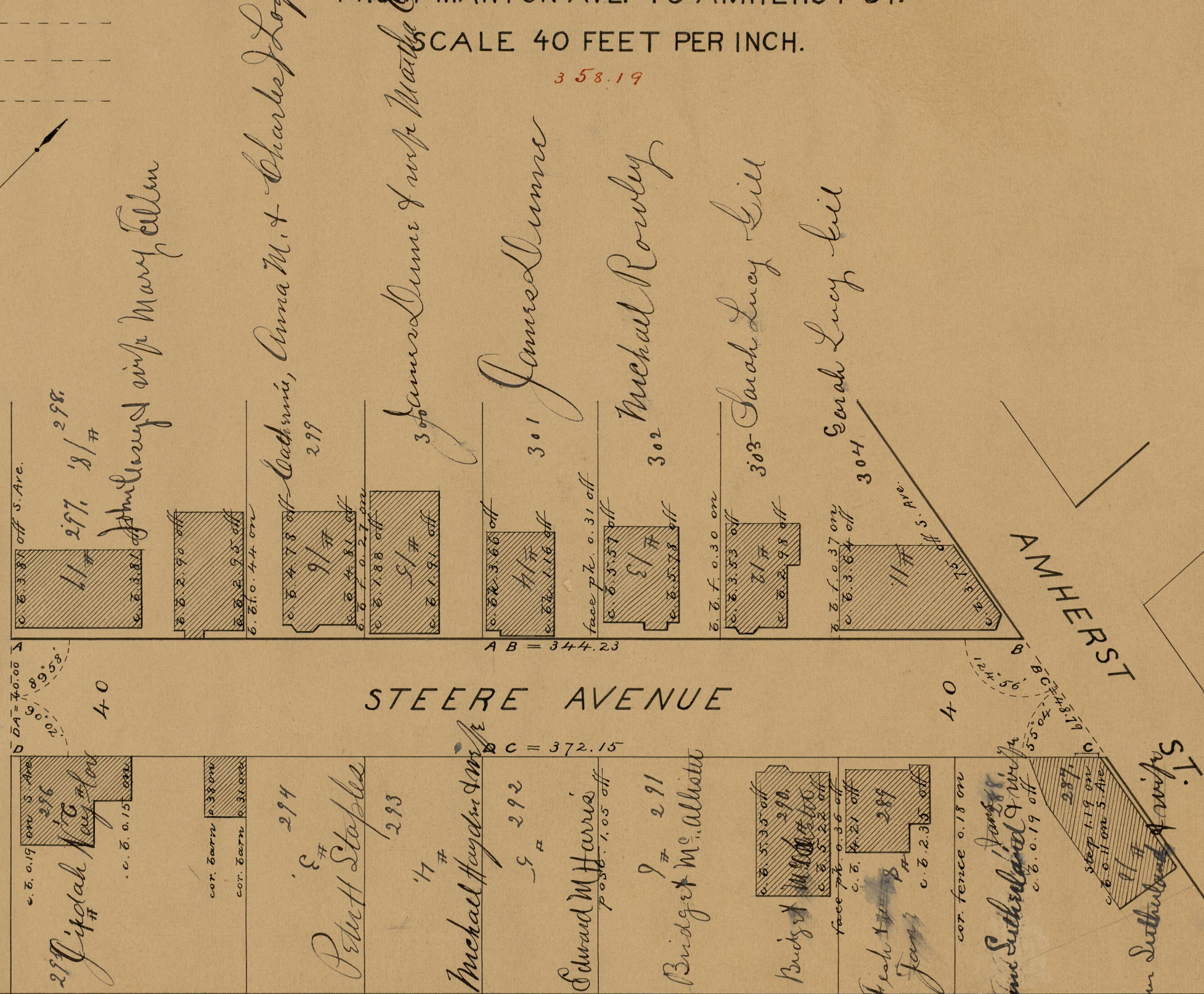
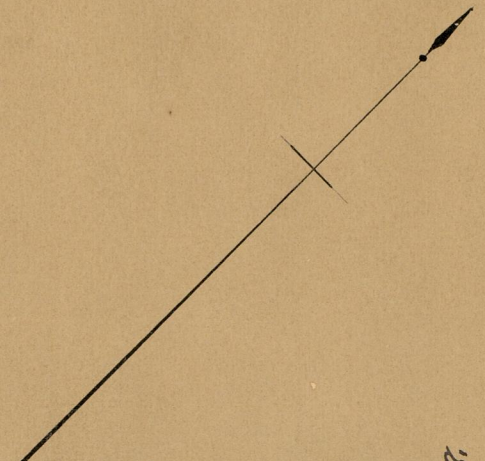
SCALE 40 FEET PER INCH.

358.19

MANTON AVE.

AMHERST

STEERE AVENUE



372.15
32
52

84

OFFICE No. 11249
 DRAWER 84
 SHEET A-9