

C.C. [unclear]

FRA-XVII-97

PROVIDENCE, R.I.
CITY ENGINEER'S OFFICE
STREET LINE DEPT.

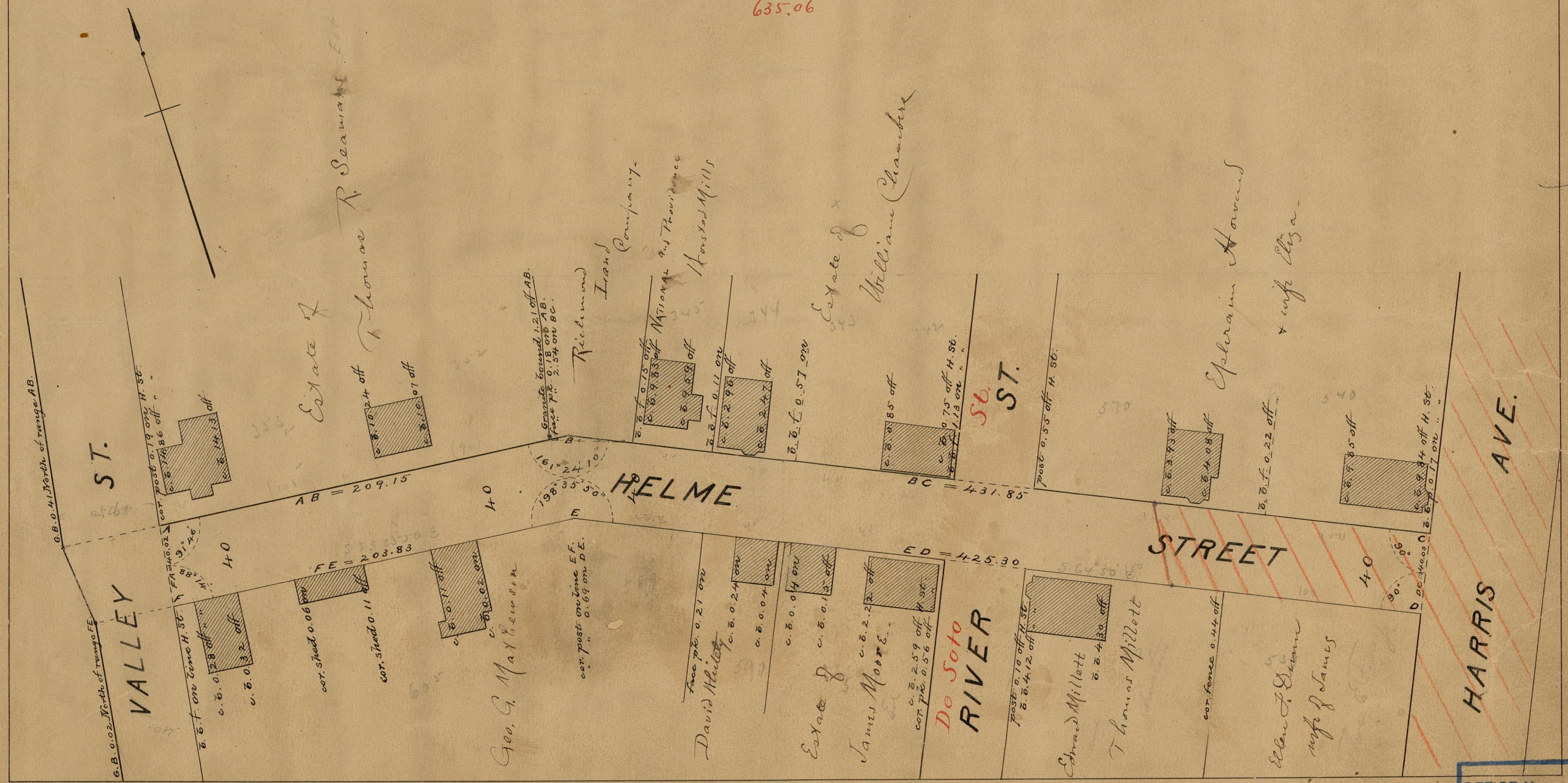
July 1, 1893

021111

PLAT OF HELME STREET FROM VALLEY ST TO HARRIS AVE.

SCALE 50 FEET PER INCH.

635.06



1084
A-89

OFFICE No.	11730
DRAWER	84
SHEET	A-89