

PROVIDENCE, R.I.
CITY ENGINEER'S OFFICE
STREET LINE DEPT.

Apr. 7, 1893.

020748

Note, The lines given agree with
plat of Francis Street presented
to the board of Aldermen Dec. 17, 1896

PLAT OF FRANCIS STREET

FROM GASPEE ST. TO SMITH ST.

IN TWO SHEETS.

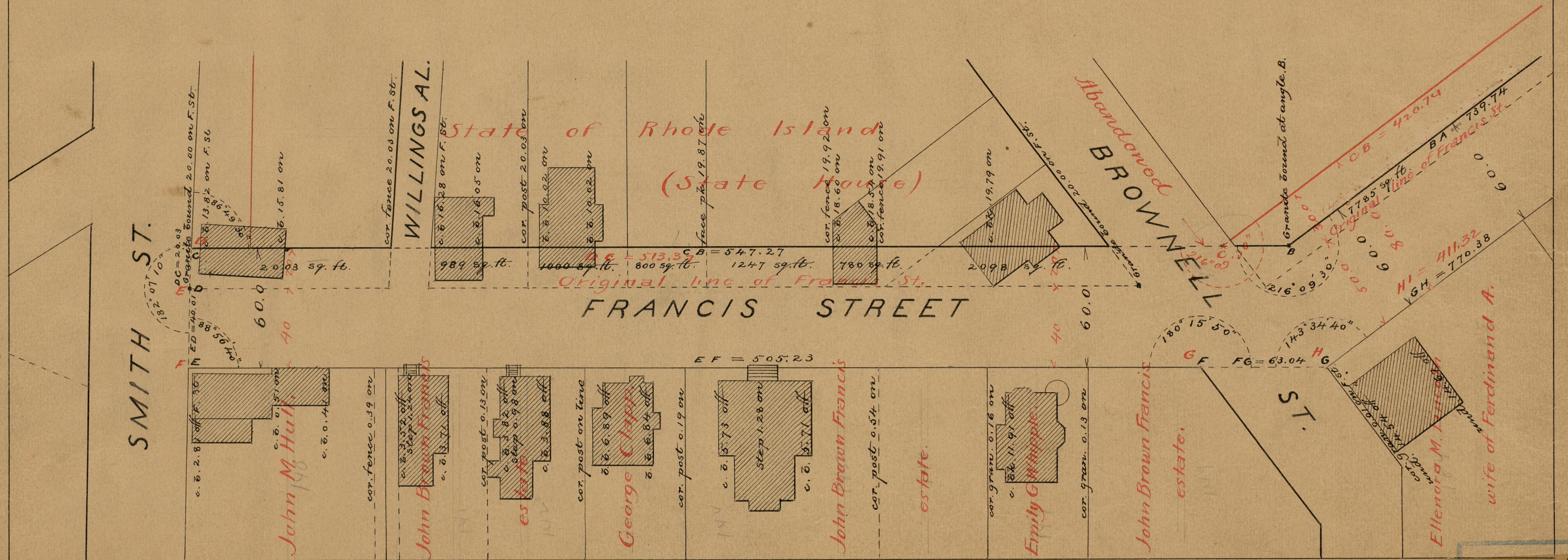
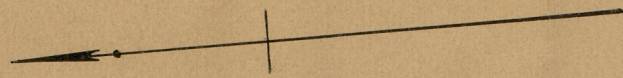
SCALE 50 FEET PER INCH.

Showing widening as agreed to by the
State of Rhode Island

and the Board of State House Commissioners.

Notes in red

were added Dec. 11, 1896



84
A-81

OFFICE NO. 1167
DRAWN
A-1