

159 Place corner of  
W. E. West St. may found

F.B.B.-XVII-15

PROVIDENCE, R.I.  
CITY ENGINEER'S OFFICE

STREET LINE DEPT.

June 24, 1892

019502

PLAT OF

# DEAN STREET

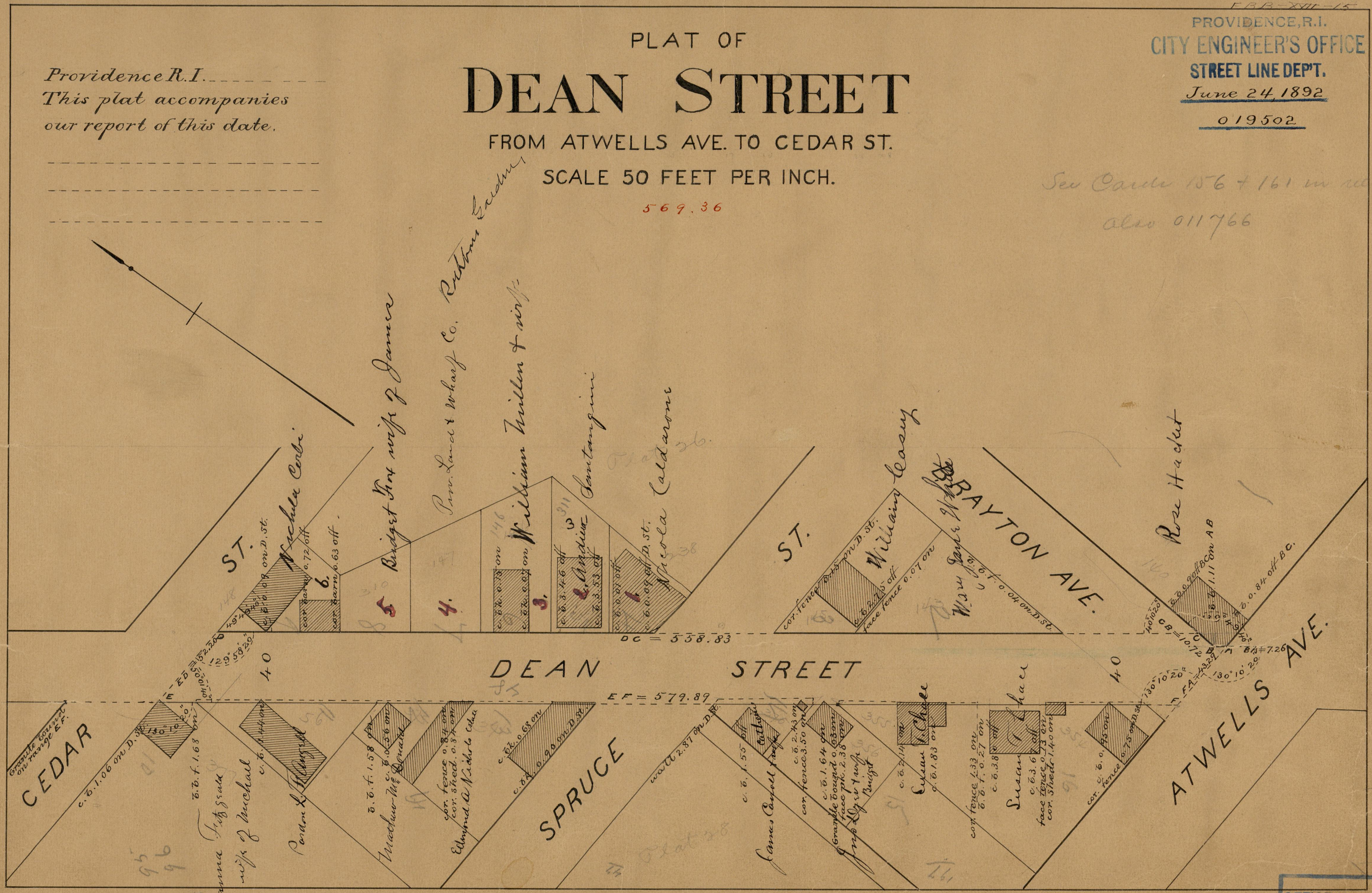
FROM ATWELLS AVE. TO CEDAR ST.

SCALE 50 FEET PER INCH.

569.36

Providence R.I.  
This plat accompanies  
our report of this date.

See Cards 156 + 161 in record office  
also 011766



84  
A7

A-7

OFFICE No. 11247

DRAWN 84

SHEET A-7