

C. C. Mumford Esq.

D.B. F-6766-67

PROVIDENCE, R.I.
CITY ENGINEER'S OFFICE
STREET LINE DEPT.

Dec. 8, 1892

020357

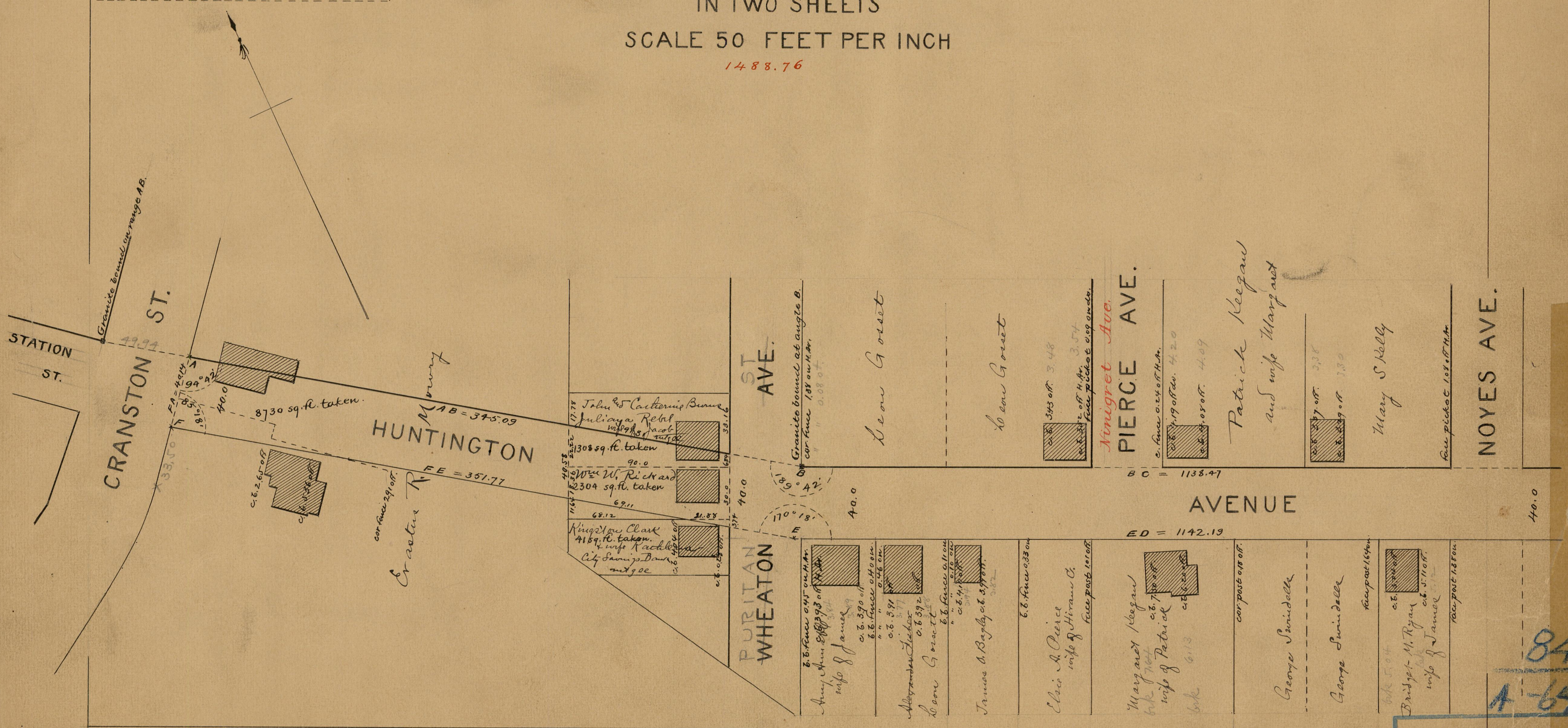
PLAT OF HUNTINGTON AVENUE

FROM CRANSTON ST TO CHAMBERS ST.

IN TWO SHEETS

SCALE 50 FEET PER INCH

1488.76



OFFICE No. 11547
DRAWER 84

84
A-64