

Red figures added Feb. 1895 after sewer was built.

PLAT OF VALLEY STREET

FROM BROADWAY TO HELME ST.

IN THREE SHEETS

SCALE 40 FEET PER INCH

1566.53

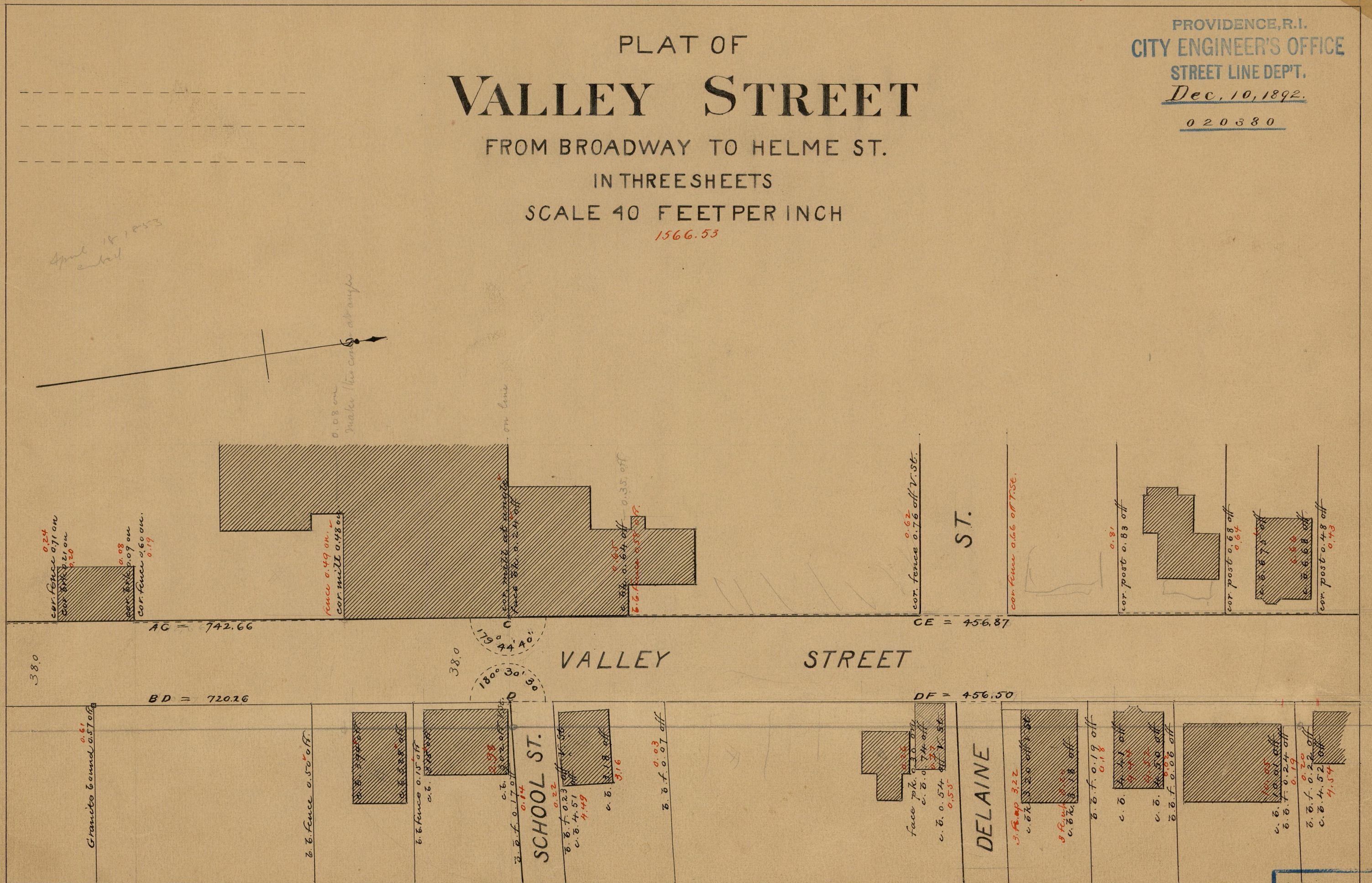
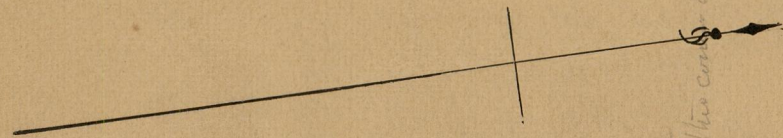
PROVIDENCE, R.I.
CITY ENGINEER'S OFFICE
STREET LINE DEPT.

Dec. 10, 1892.

020380

*April 18, 1893
entail*

*0.08 on
make this curve at angle*



38.0

AC = 742.66

BD = 720.26

38.0

VALLEY STREET

STREET

CE = 456.87

DF = 456.50

Granite Canal 0.51 off

b. b. fence 0.50 off

b. b. fence 0.15 off

SCHOOL ST.

b. b. f. 0.07 off

DELAINE

84
A-61

OFFICE No.	11543
DRAWER	84
SHEET	A-61