

PROVIDENCE, R.I.  
CITY ENGINEER'S OFFICE  
STREET LINE DEPT.

Nov. 30, 1892.

020330

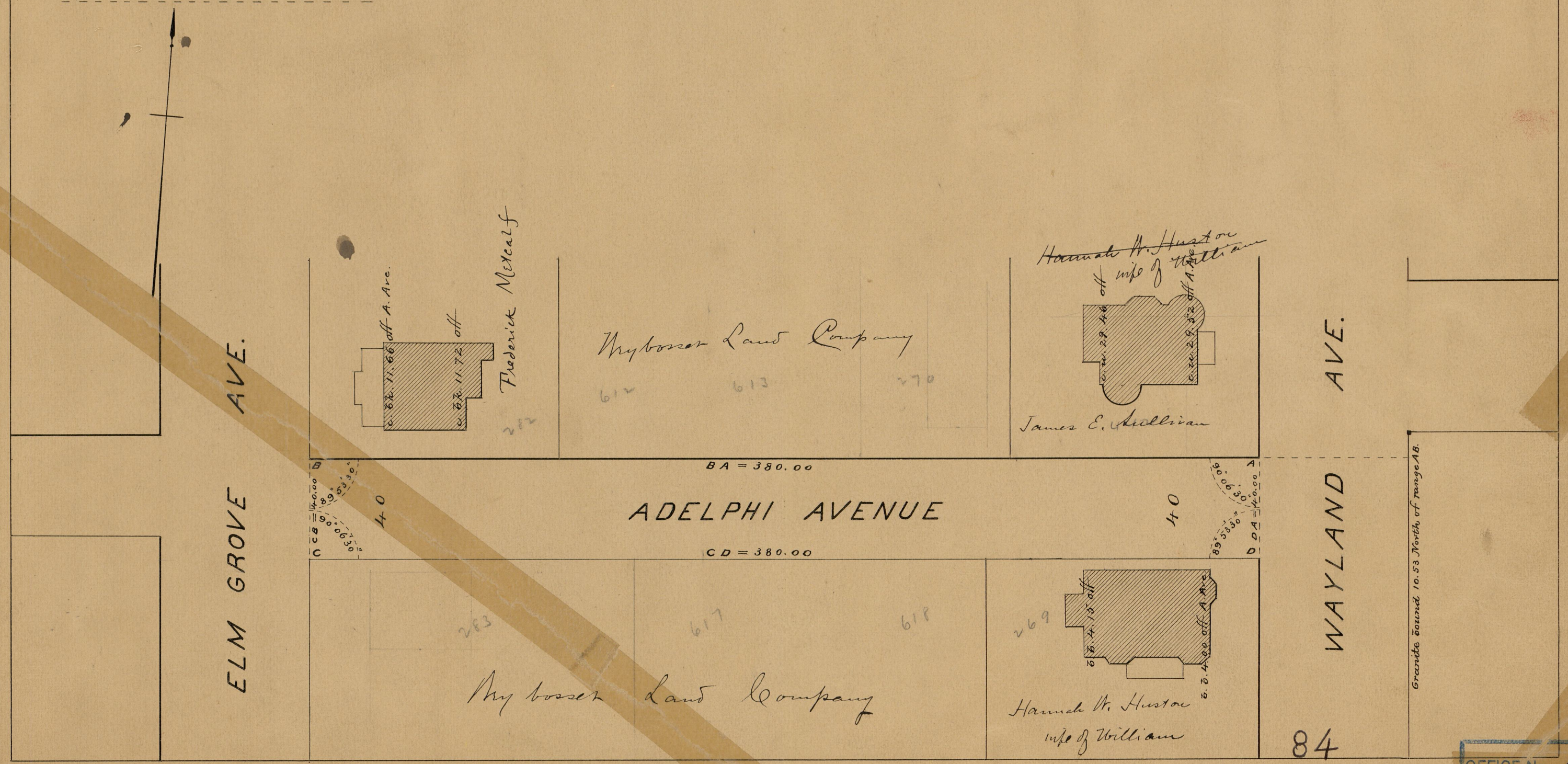
Providence R.I.  
This plat accompanies  
our report of this date.

# PLAT OF ADELPHI AVENUE

FROM WAYLAND AVE. TO ELM GROVE AVE.

SCALE 40 FEET PER INCH.

380.0



84

A-53

A-5

OFFICE No.	11524
DRAWN	84
SHEET	A 53