

PROVIDENCE, R.I.
CITY ENGINEER'S OFFICE
STREET LINE DEPT.
Nov. 18, 1892.

020276

Providence R.I. -----
This plat accompanies
our report of this date.

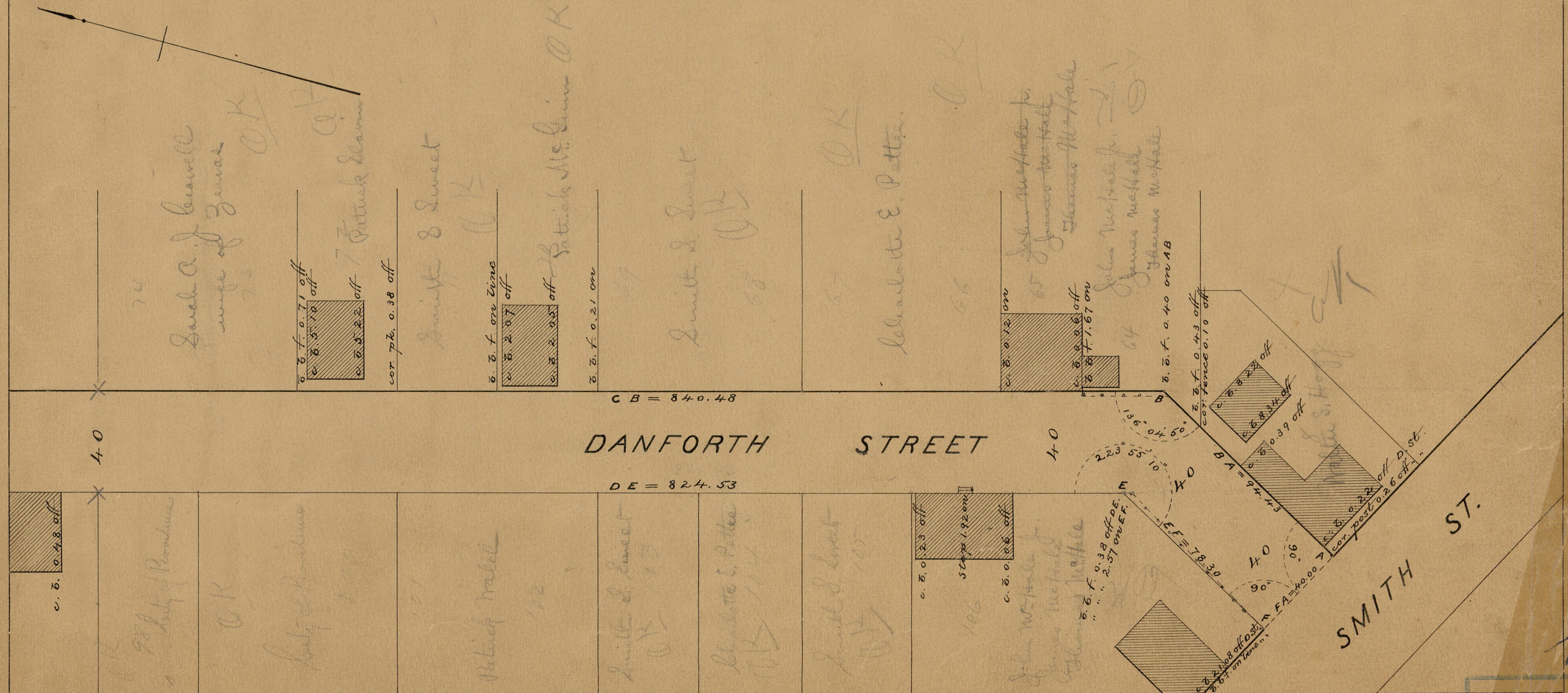
DANFORTH STREET

FROM SMITH ST. TO VALE ST.

IN TWO SHEETS.

SCALE 40 FEET PER INCH.

918.87



DANFORTH STREET
CB = 840.48
DE = 824.53

SMITH ST.

OFFICE No. 115
DRAWER 8

84
A-50