

Providence R.I.  
This plat accompanies  
our report of this date.

PROVIDENCE, R.I.  
CITY ENGINEER'S OFFICE  
STREET LINE DEPT.  
Oct. 27, 1892.

020146

PLAT OF

LISBON STREET

FROM REGENT AVE. TO CHALKSTONE AVE.

SCALE 60 FEET PER INCH.

843.57

CHALKSTONE AVE.

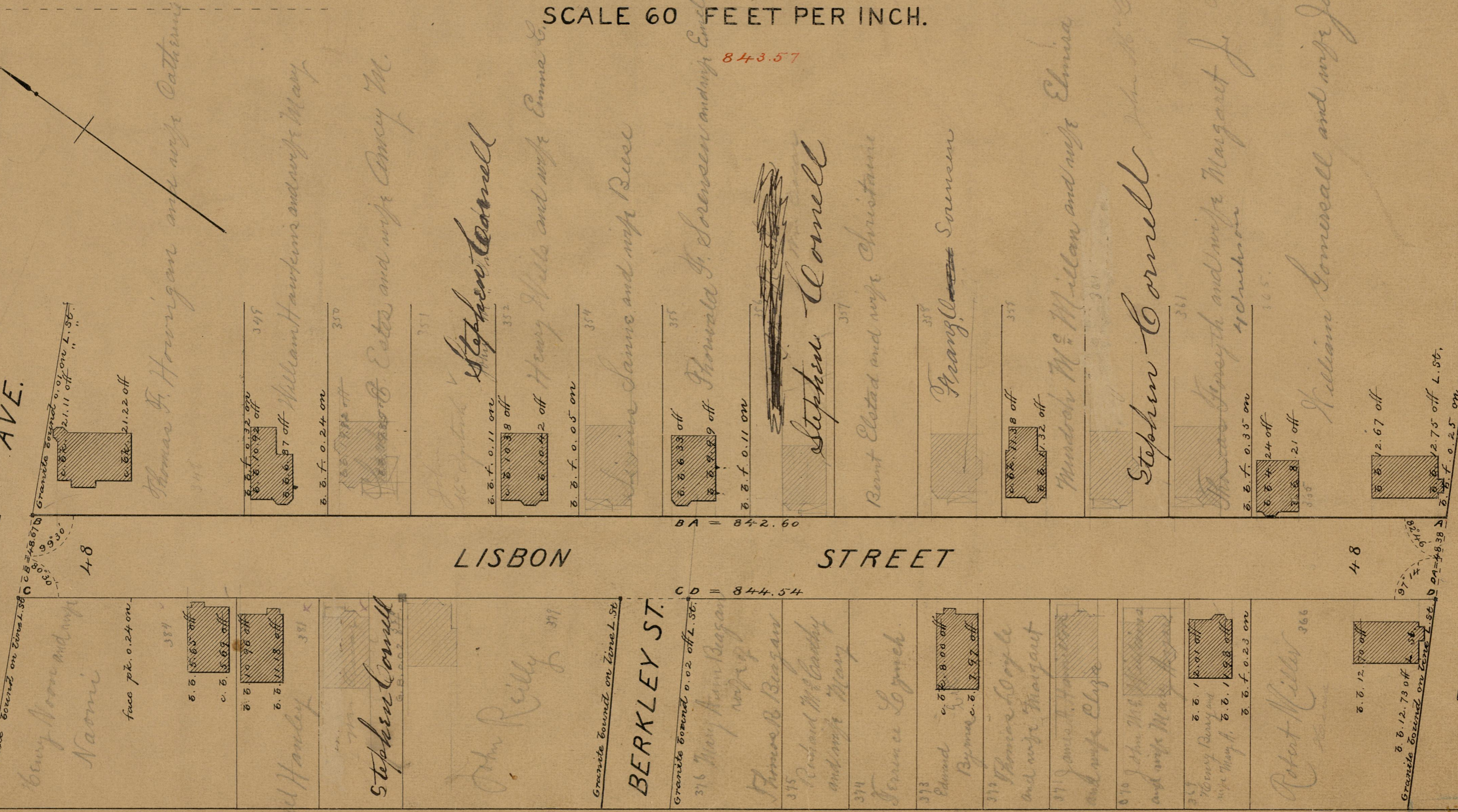
REGENT AVE.

LISBON STREET

LISBON STREET

BA = 842.60

CD = 844.54



84  
A-40

11485

D