

PROVIDENCE, R.I.
CITY ENGINEER'S OFFICE
STREET LINE DEPT.

Oct. 26, 1892.

020117

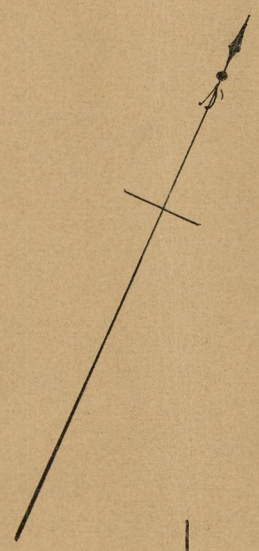
Providence R. I.
This plat accompanies
our report of this date.

PLAT OF ALLSTON STREET

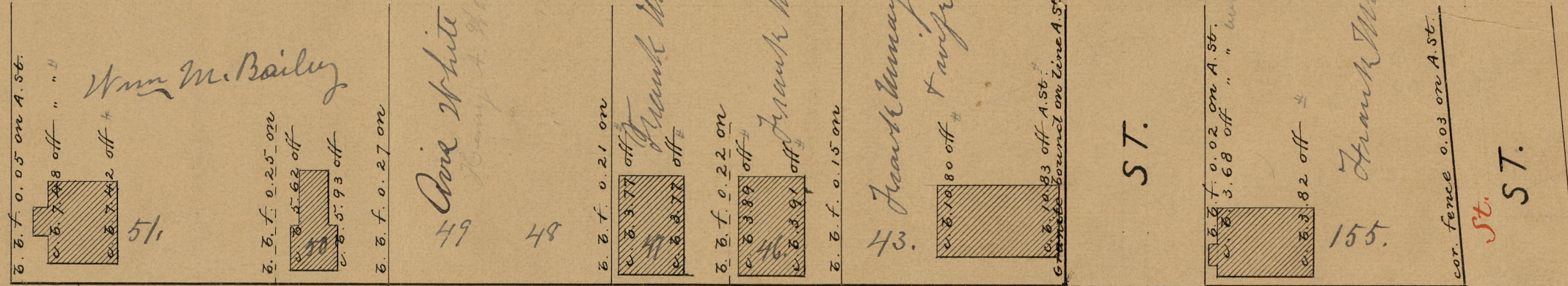
FROM RIVER AVE. TO CORNELL ST.

SCALE 50 FEET PER INCH.

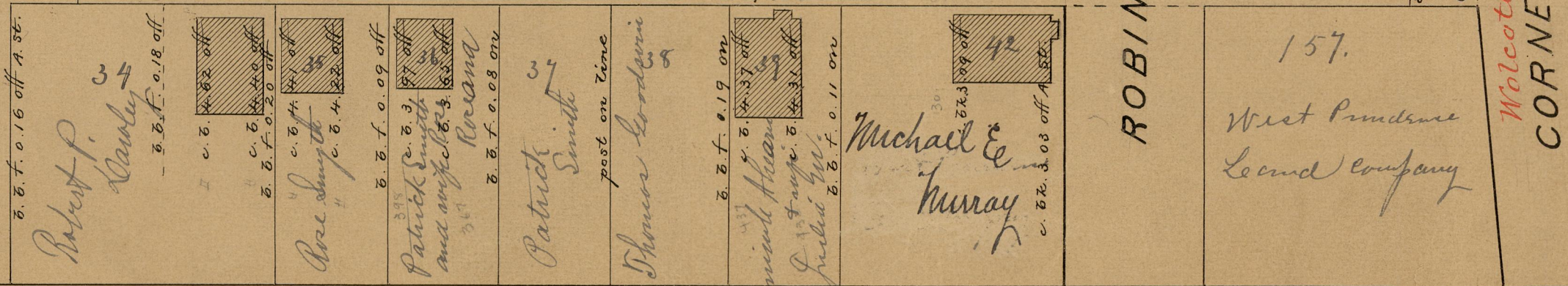
519.30



AVE.



RIVER



ALLSTON STREET

ST.

ROBIN

ST.

Wolcott
CORNELL

OFFICE No. 11474
DRAWER " 84
SHEET " 5

84
A-37