

PROVIDENCE, R.I.  
CITY ENGINEER'S OFFICE  
STREET LINE DEPT.  
Oct. 24, 1892.  
020100

Providence R.I.  
This plat accompanies  
our report of this date.

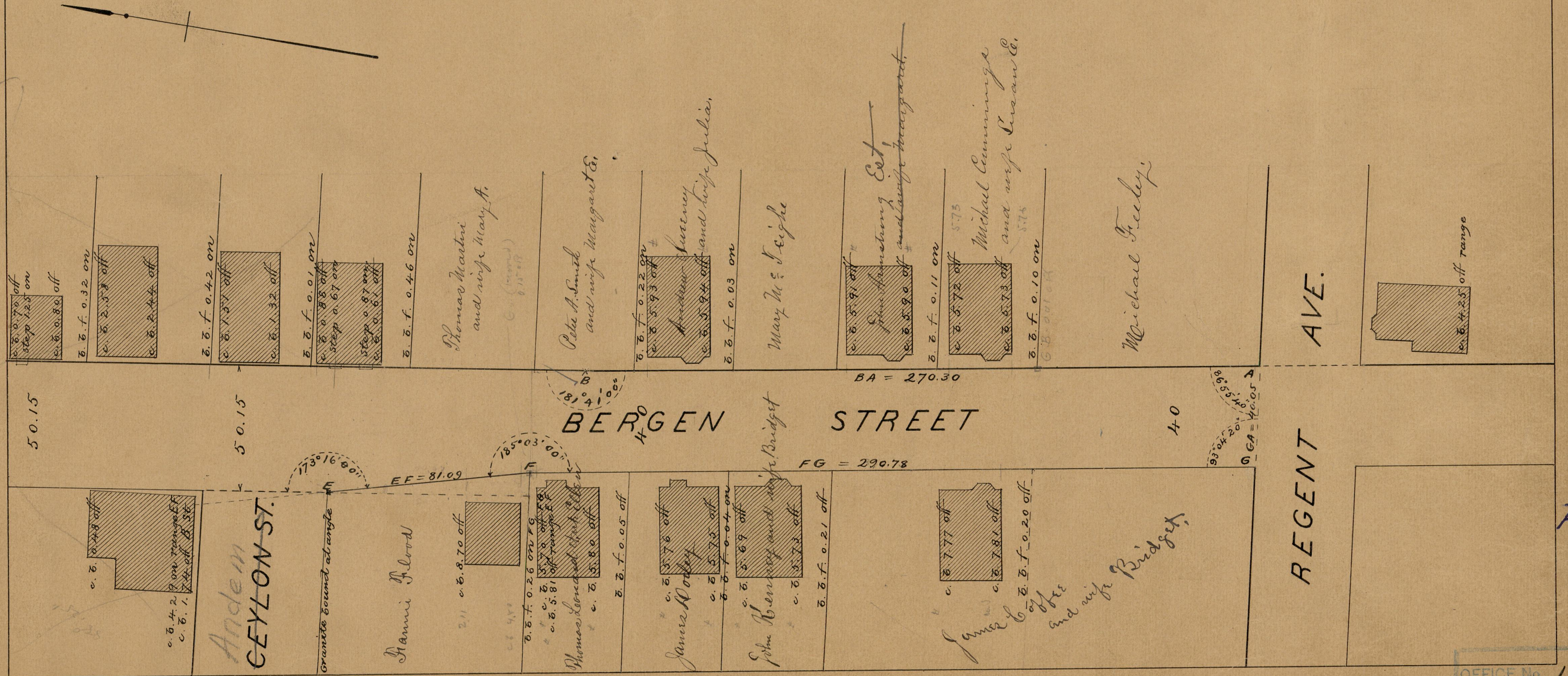
# PLAT OF BERGEN STREET

FROM REGENT AVE. TO CHALKSTONE AVE.

IN TWO SHEETS

SCALE 40 FEET PER INCH.

943.32



|           |                |
|-----------|----------------|
| 5325 42   | 9995 421       |
| 172.16    | 19089 67       |
| 26141.40  | 1904888 = 8024 |
| 198.18 20 |                |

84  
A-35

OFFICE No. 111  
DRAWER  
SHEET