

Providence R. I.  
This plat accompanies  
our report of this date.

PROVIDENCE, R.I.  
CITY ENGINEER'S OFFICE  
STREET LINE DEPT.

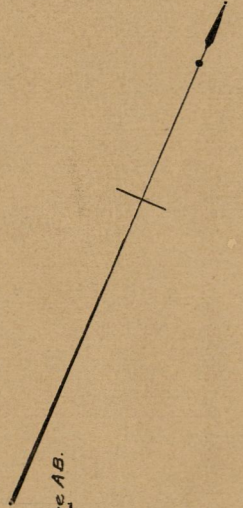
# PLAT OF REGENT AVENUE FROM RIVER AVE. TO CORNELL ST. SCALE 50 FEET PER INCH.

Oct. 24, 1892

020099

Recd Nov 23 1892

496.64



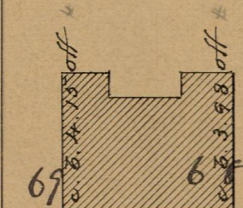
AVE.

Granite bound 0.02 on range AB.

car. post 0.07 off Regent Ave.

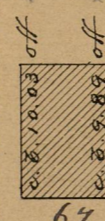
70. Fred Latham

69. 0.0.0.08 off

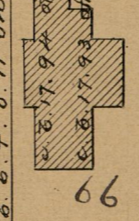


William Ingham

67. 0.0.0.03 on

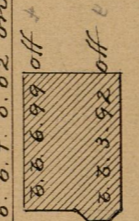


66. 0.0.0.11 on



65. William Latham

63. 0.0.0.02 on



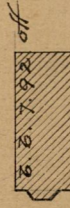
63. Friedrich  
Granite bound 0.12 off R. Ave.

Granite bound 0.12 off R. Ave.

ST.

post 0.10 off R. Ave.

149. Franklin Raynor



Granite bound 0.02 off R. Ave.

DA = 30.00

50

REGENT AVENUE

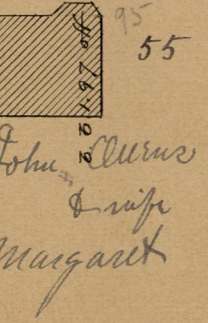
AB = 494.28

DC = 499.00

50

RIVER

0.0.0.87 off Regent Ave.

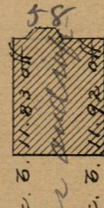


55

56. William Bailey

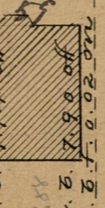
West Providence Lumber Co.

0.0.0.06 on



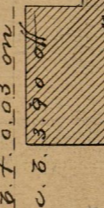
58

0.0.0.05 on



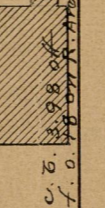
60

0.0.0.03 on



62

0.0.0.18 on



ROBIN

post 0.11 off R. Ave.

151. Frank Murray

post 0.16 off R. Ave.

Wolcott St.  
CORNELL ST.

OFFICE No. 11468  
DRAWER " 87

84  
A-34

84  
A-3

84  
A34