

26  
78.5  
111.4  
131.4

FB3-XVII-30

PROVIDENCE, R.I.  
CITY ENGINEER'S OFFICE  
STREET LINE DEPT.

Oct 12 1892

020041

Providence R.I.  
This plat accompanies  
our report of this date.

PLAT OF  
**LAURA STREET**  
FROM HAMILTON ST. TO BROAD ST.  
IN TWO SHEETS  
SCALE 40 FEET PER INCH.

984.25



c. b. 4.90 off range AB.

ST.

#10  
William Post

#9  
Andrew J. Smith  
Wm. H. Dyer

#8  
Honor W. Whitford

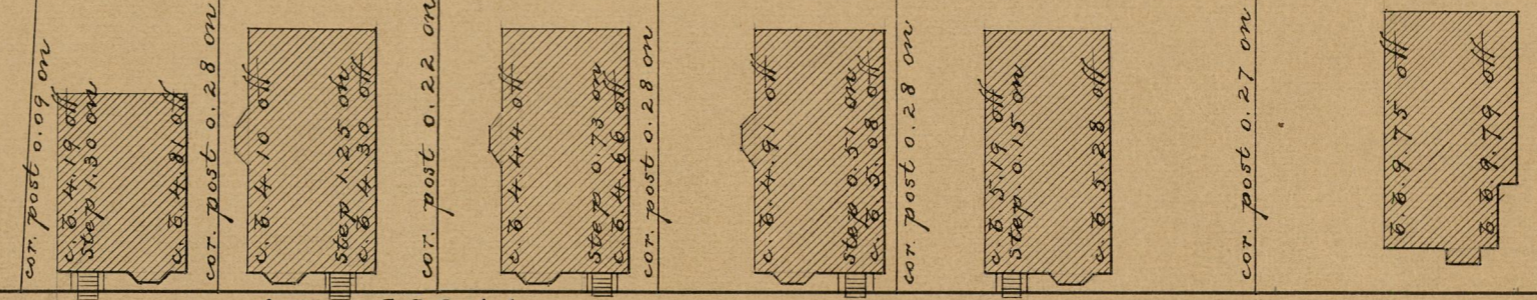
#7  
Jackson Institution  
In Savings

#6  
Wm. H. Scott

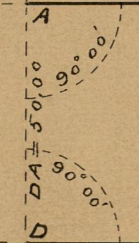
#5  
Silas Steer

#4  
Alfred P. Sison

ST.



AB 988.46



50

LAURA STREET

50

DC = 980.03

c. b. 3.00 off range CD.

HAMILTON

#11  
William Post

#12  
Andrew Smith  
Wm. H. Dyer

#13  
Andrew Smith  
Wm. H. Dyer

#14  
Wm. H. Dyer

#15  
James Anderson

#16  
Pat. W. Allen

#17  
Sylvester B. Ward

#18  
Pauline A. Chapman

NIAGARA

A-30

OFFICE No. 11460  
DRA. 84  
SHE. A-30

A-30