

PROVIDENCE, R.I.
CITY ENGINEER'S OFFICE
STREET LINE DEPT.
May 18, 1892
019265

Providence R.I.
This plat accompanies
our report of this date.

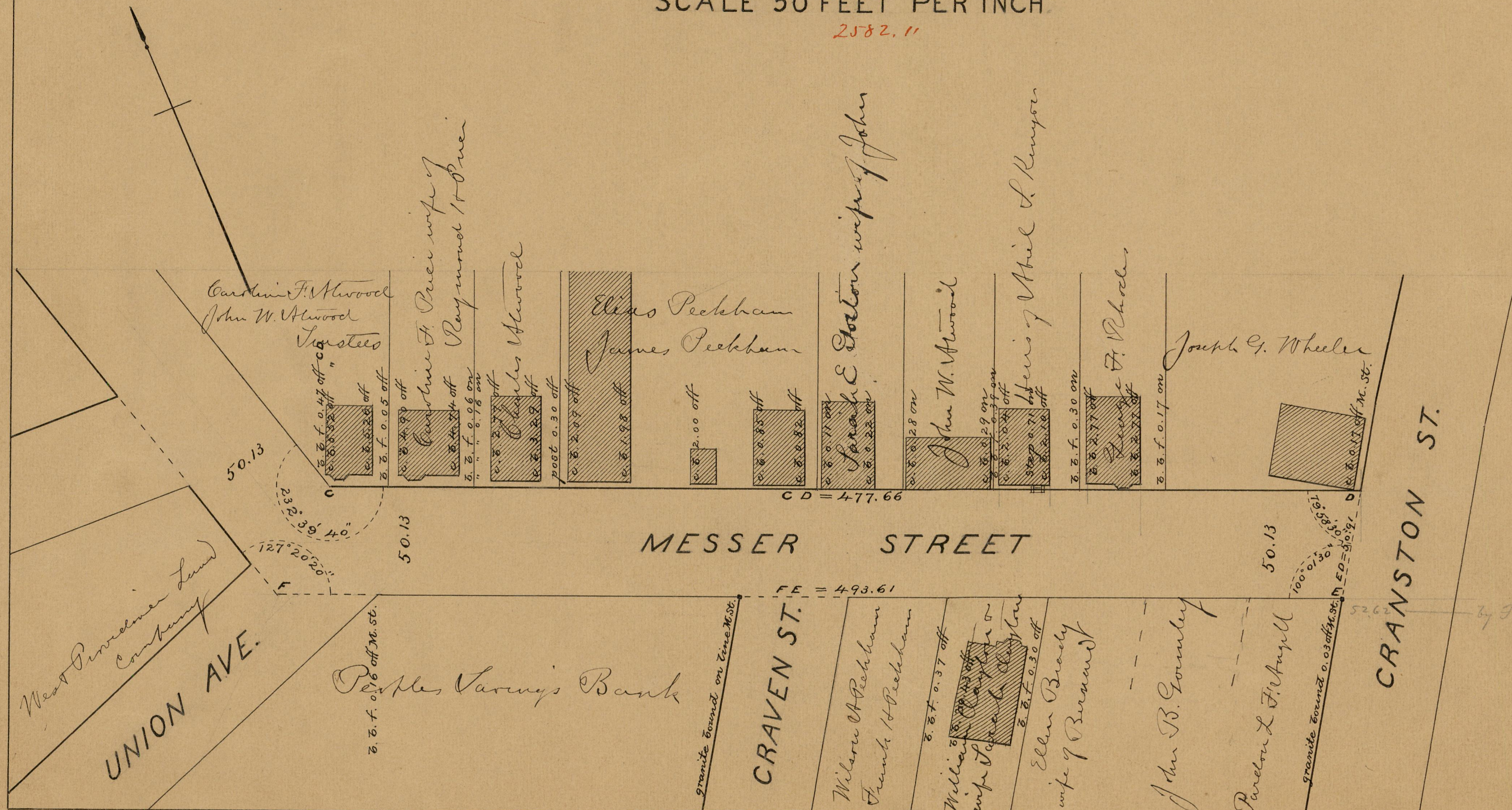
PLAT OF MESSER STREET

FROM HIGH ST. TO CRANSTON ST.

IN FOUR SHEETS

SCALE 50 FEET PER INCH

2582.11



84
A-26

OFFICE No.	11390
DRAWN	84
SHEET	A-26