

PROVIDENCE, R.I.
CITY ENGINEER'S OFFICE
STREET LINE DEPT.
May 18, 1892
019264

Providence R.I.
This plat accompanies
our report of this date.

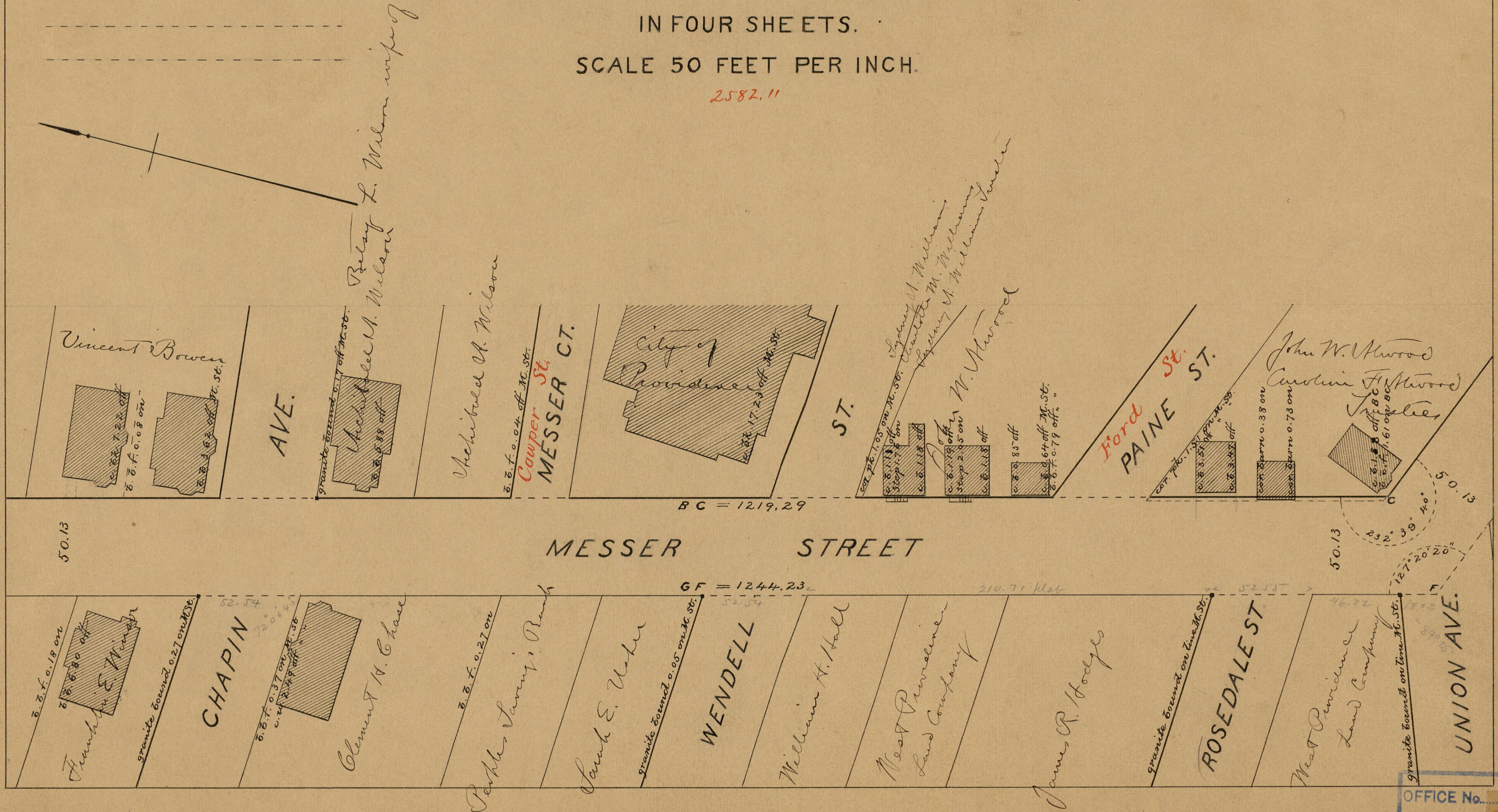
PLAT OF MESSER STREET

FROM HIGH ST. TO CRANSTON ST.

IN FOUR SHEETS.

SCALE 50 FEET PER INCH.

2582.11



84
A25

OFFICE No. 11389
DRAWER 81
SHEET A-25