

PROVIDENCE, R.I.
CITY ENGINEER'S OFFICE
STREET LINE DEPT.
May 18, 1892
019263

Providence R.I.
This plat accompanies
our report of this date.

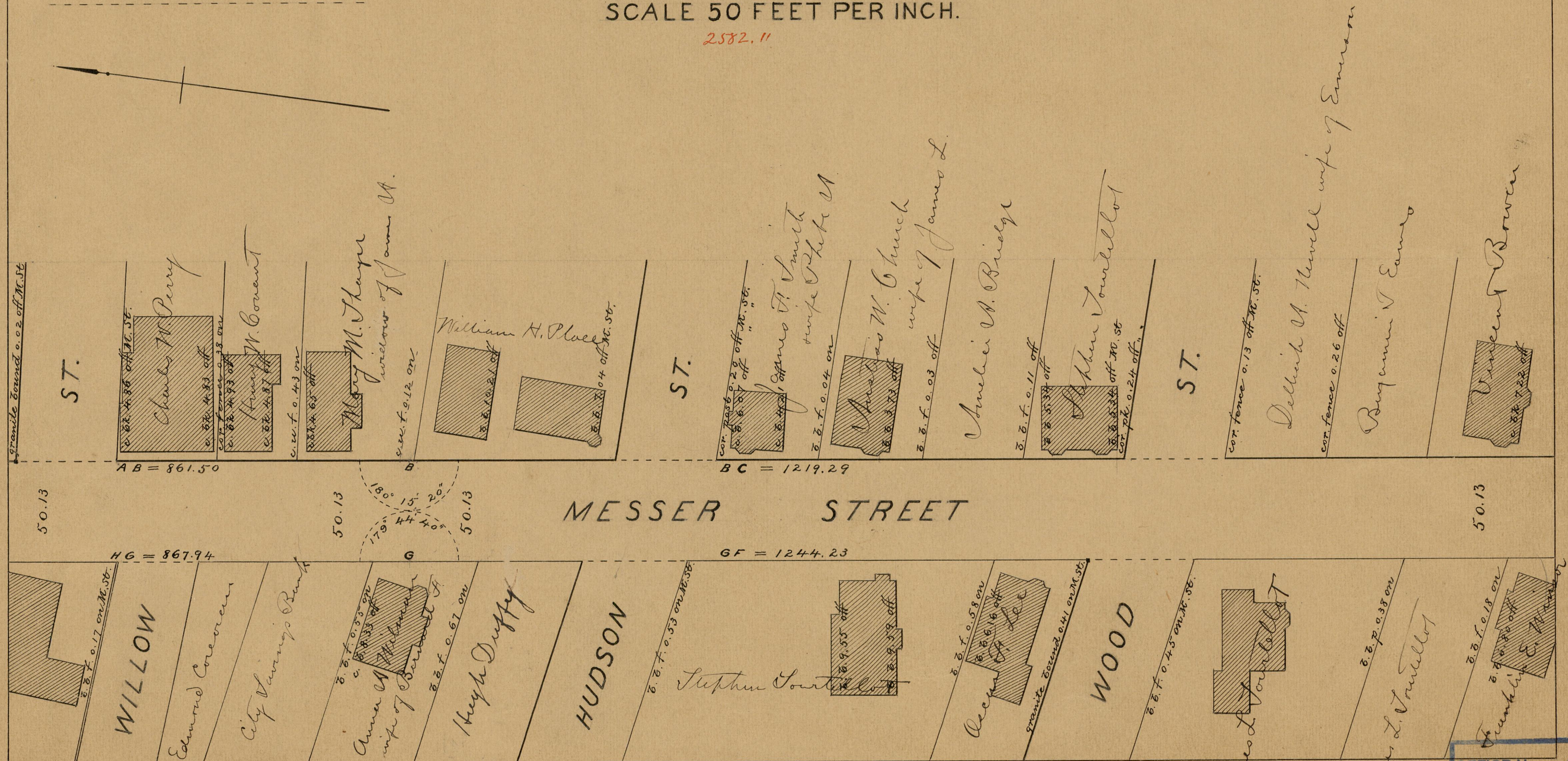
PLAT OF
MESSER STREET

FROM HIGH ST. TO CRANSTON ST.

IN FOUR SHEETS.

SCALE 50 FEET PER INCH.

2582.11



OFFICE No. 11388
 DRAWER " 84
 SHEET " A-24

84
A-24