

C.C. Mumford Eng.

F.B. XVII-32

PROVIDENCE, R.I.
CITY ENGINEER'S OFFICE
STREET LINE DEPT.

Aug. 27, 1892.
019828

PLAT OF

ORCHARD AVENUE

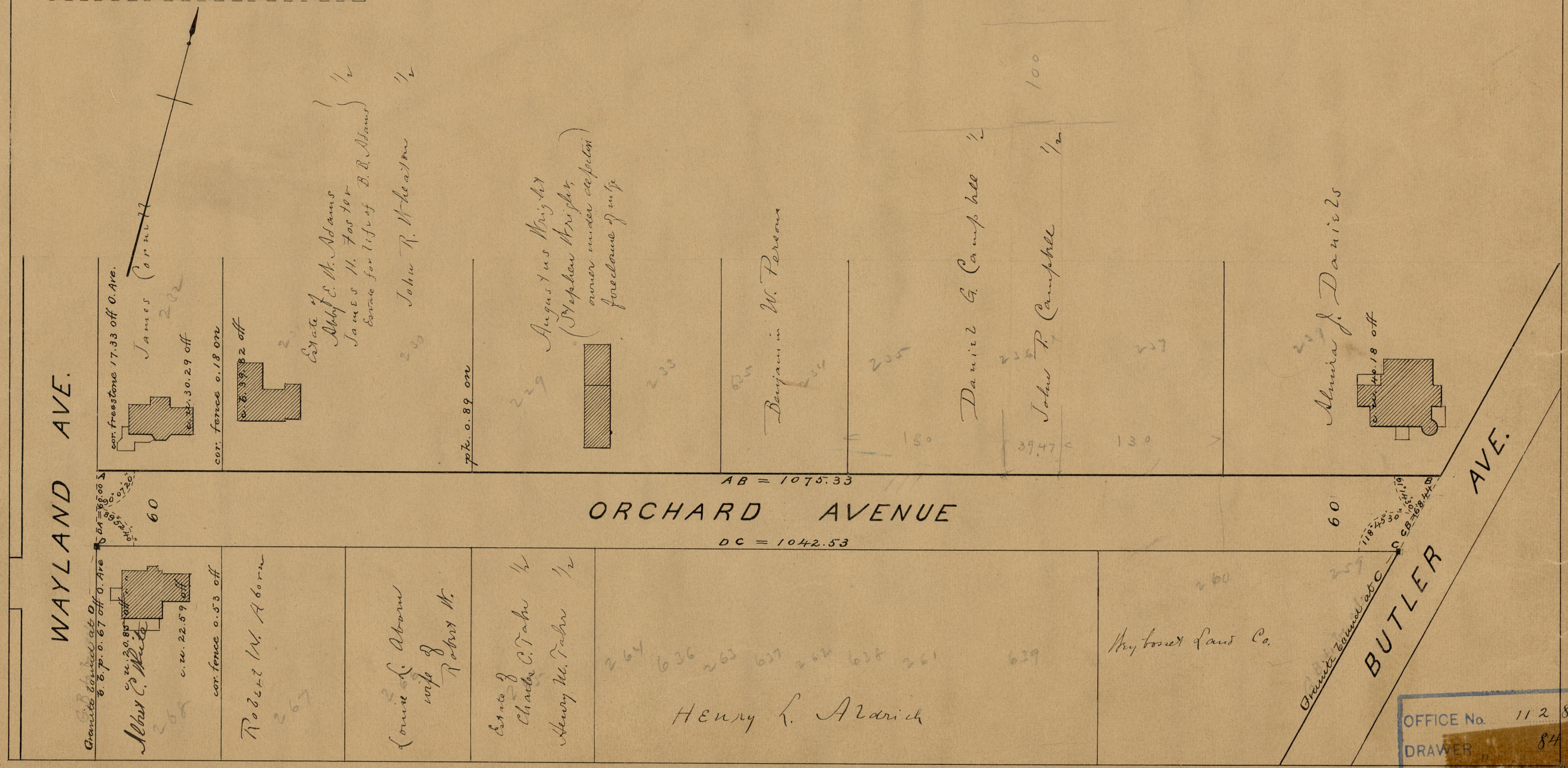
FROM WAYLAND AVE. TO BUTLER AVE.

SCALE 80 FEET PER INCH.

1058.94

Ellis St

Providence R.I.
This plat accompanies
our report of this date.



84
A 21

OFFICE No.	11281
DRAWN	84
SHEET	A-21