

PROVIDENCE, R.I.
CITY ENGINEER'S OFFICE

STREET LINE DEPT.

July 29, 1892

019692

PLAT OF

RIVER STREET

FROM GROVE ST. TO THE WOONASQUATUCKET RIVER

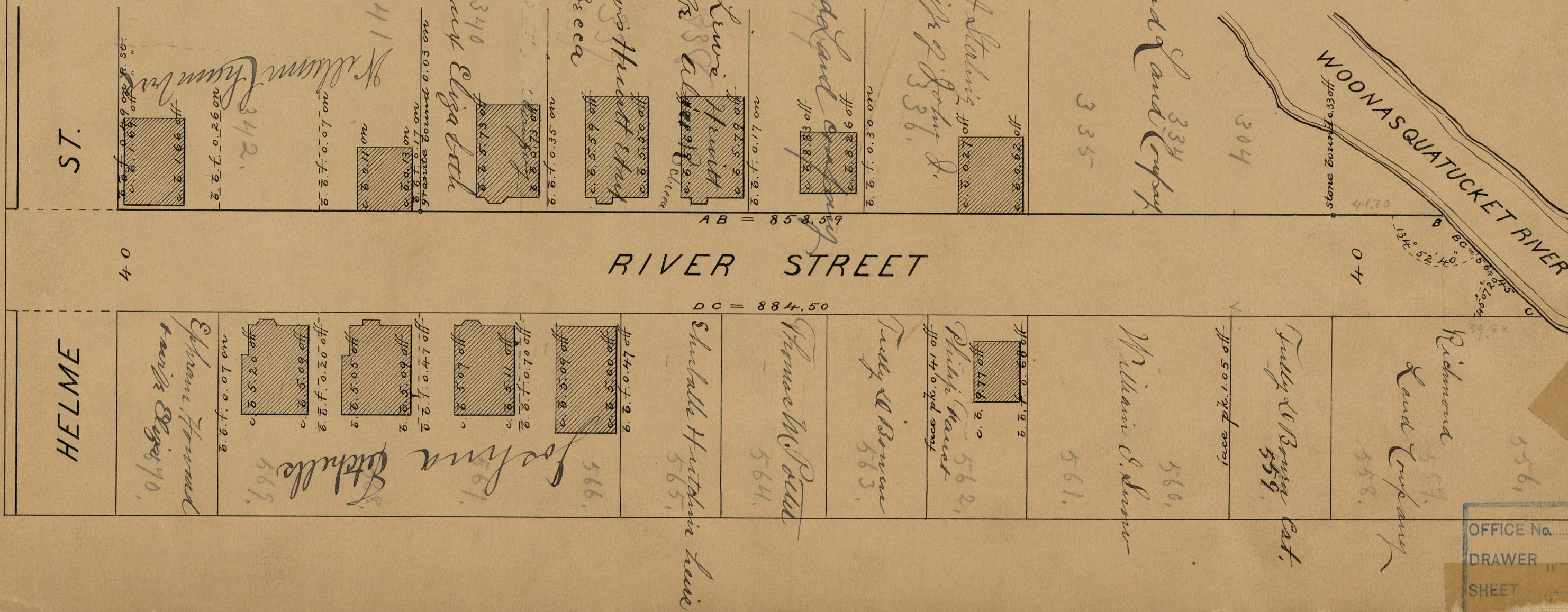
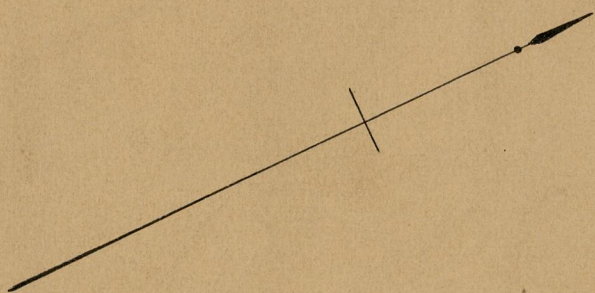
IN TWO SHEETS.

SCALE 40 FEET PER INCH.

871.5-4

Changed to De Sota St. Dec. 7, 1899.

Providence R.I.
This plat accompanies
our report of this date.



OFFICE No.	11253
DRAWER	84
SHEET	A-15

84/15